

C7RND

LED LINEAR LIGHTING, HIGH LUMEN
INTEGRAL POWER SYSTEM



APPLICATION

The C7RND LED Linear Lighting System is designed with Tempo's CLIP[®] (Configurable Lighting Platform) providing options to suit multiple applications - from wall washing and wall grazing to direct ambient illumination. Individual units from 2ft to 8ft may be joined to form linear runs, reducing the number of power feeds required during installation.

CONSTRUCTION

- Extruded aluminum housing available in natural anodized finish or powdercoated
- Cast aluminum light modules, joiners and end caps
- Individual fixture lengths of 2ft, 3ft, 4ft, 5ft, 6ft, 7ft or 8ft lengths may be joined to form extended linear runs
- Mounting options for sensors available
- CSA damp location listed

OPTICS / LENS / DIFFUSER

- ½ Round lightly frosted lens available with optional high diffusion film for higher lens uniformity and visual comfort
- 35° optics for targeted light distribution
- High-angle glare reducing micro-baffle available with optional ½ round lightly frosted lens

POWER SYSTEM

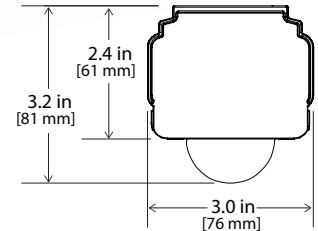
- Integral driver mounts to spring loaded aluminum carrier to maintain thermal contact with heat dissipating housing and to isolate from LED light engine increasing component life
- Single circuit and dual circuit configurations available
- Dimming options available, compatible with remote motion sensor control

PERFORMANCE

- Lumen packages range from a nominal 570 to 1050 lumens per foot based on watts per foot selection
- Dense Pack (DP) LED spacing option provides higher luminaire lens uniformity with an increased number of LEDs per foot than Standard (ST) LED spacing. The delivered lumens and power consumption are nominally equivalent with Dense Pack or Standard LED Spacing selection.
- Operating temperature range of -20°C to 50°C
- Rated for a minimum of 86,000 hours (L85) at 25°C ambient operating temperature
- Power Supply Total Harmonic Distortion <20%, Power Factor >0.9

LIGHT CHARACTERISTICS

- 2200K, 2700K, 3000K, 3500K, 4000K and 4500K Color Temperature options
- Typical CRI of 80+, 90+ CRI option available with 2700K, 3000K or 3500K selection
- LED's are selected and placed on the printed circuit boards via Tempo Industries' UniBin process which ensures consistent hue and color within the entire installation. Color variations are held to a minimum, within a 2-step MacAdam ellipse.



WARRANTY

Tempo provides a 5-year limited warranty.



PERFORMANCE SUMMARY All data nominal.

Watts/ft	11 (21 Optic)	11 (33 Optic)	11 (40 Optic)	11 (41 Optic)
Lumens/ft	1050	950	640	570
Lumens/Watt	95	86	58	52
Maximum Run Length*	80	80	80	80

*Based on 120V per foot.

C7RND

LED LINEAR LIGHTING, HIGH LUMEN
INTEGRAL POWER SYSTEM

ORDERING INFORMATION

Example: **C7RND-DLF-00-UNVE8-27-NA**

C7R Industrial, Half Round lens +high diffusion film, 120-277V, ELV Dimming down to 5%, 8 W/Ft, 2700K, Natural Anodized finish

STANDARD LED SPACING

C7	R	ND	Optic/Lens/Diffuser	Module Spacing	Voltage	Dimming	Watts/Foot	Color Temp	Finish	Fixture Length ¹
Series	Platform	Fixture Attribute								
C7	R Rigid	ND Industrial	DLF Half Round lens + high diffusion film 3535 Half Round lens + 35°x35° optic BF Baffle BFL Baffle + lens	00 0"	UNV 120-277V 120 120V	N² Non-dimming ED² eldoLED 0-10V Dimming (1%) ED1² eldoLED 0-10V Logarithmic Dimming (1%) ES² Lutron Hi-lume 1% EcoSystem® LED driver-L3DAE E² ELV (Electronic Low Voltage) dim to 5% T³ Lutron HiLume® 1% Triac 2-wire LED driver (120V forward phase) -LTEA2W Z³ 0-10V Dimming (10%) ET³ ELV and Triac Dimmers dim to zero (0%)	11 11 W/ft	22 2200K 27 2700K 30 3000K 35 3500K 40 4000K 45 4500K 27H 2700K High CRI (90+) 30H 3000K High CRI (90+) 35H 3500K High CRI (90+)	NA Natural Anodized (Std) BK Black Anodized WH White CC Paint to match color chip	

NOTES:

- (1) Fixture length measured in feet. No decimals used (example - 1.5ft will be 15).
- (2) UNV (120-277V)
- (3) 120 (120V) only

C7RND

LED LINEAR LIGHTING, HIGH LUMEN
INTEGRAL POWER SYSTEM

SYSTEM INTEGRATION ACCESSORIES

SURGE SUPPRESSION DEVICE A Tempo furnished surge suppression device must be installed on each supplying branch circuit to comply with Tempo's 5-year warranty terms		
	SSD-120	120V Branch Circuit
	SSD-277	277V Branch Circuit

END CAPS Two required per run		
	C7A-EC-LG	End Cap with top knock-out, light gray
	C7A-ECC-LG	End Cap for surface mount, light gray
	C7A-ECCMOD-LG	End Cap with end knock-out, light gray

CONTINUOUS RUN JOINERS One required per two joined sections		
	C7A-CR	Continuous Run Joiner
	C7A-CRC	Continuous Run Joiner for surface mount

MOUNTING HARDWARE		
	C7A-JB	J-Box cover, White
	C7A-HP-XX	Hang Straight Pendant Assembly, Indicate Stem length (XX-inches), White
	C7A-RP-XX	Rigid Pendant Assembly, Indicate Stem length (XX-inches), White
	C7A-DC	Surface Mount Clip for variable suspension spacing, no finish
	C7A-SE	Suspension Eyelet for fixed suspension spacing, no finish
	PA7	*/- 50° adjustable bracket for surface mounting. Minimum of 2 required per section.

MICROBAFFLE (40)

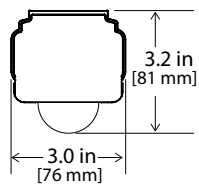


C7RND

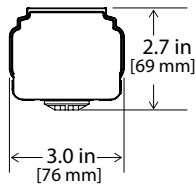
LED LINEAR LIGHTING, HIGH LUMEN
INTEGRAL POWER SYSTEM

DIMENSIONAL INFORMATION

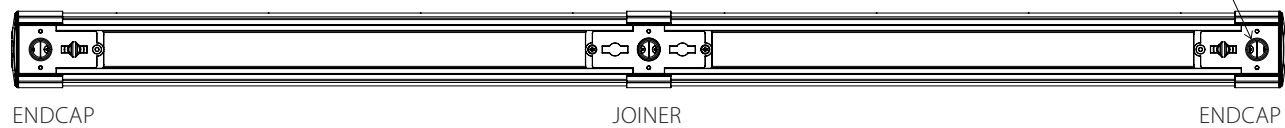
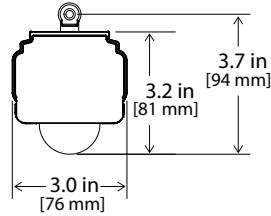
1/2 ROUND LENS



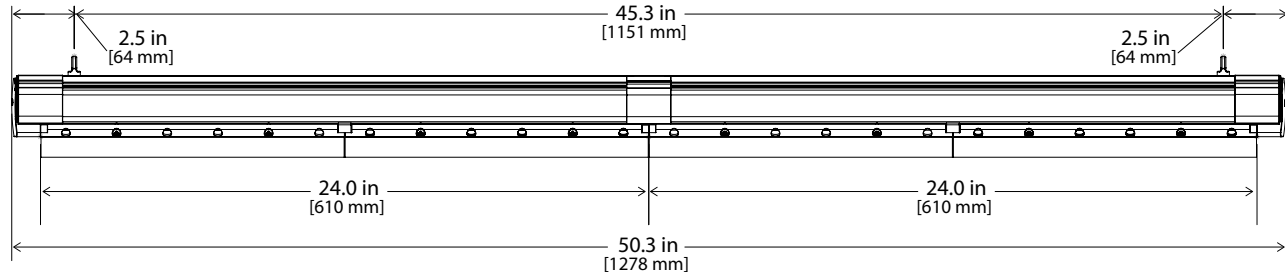
MICROBAFFLE



SUSPENSION EYELET

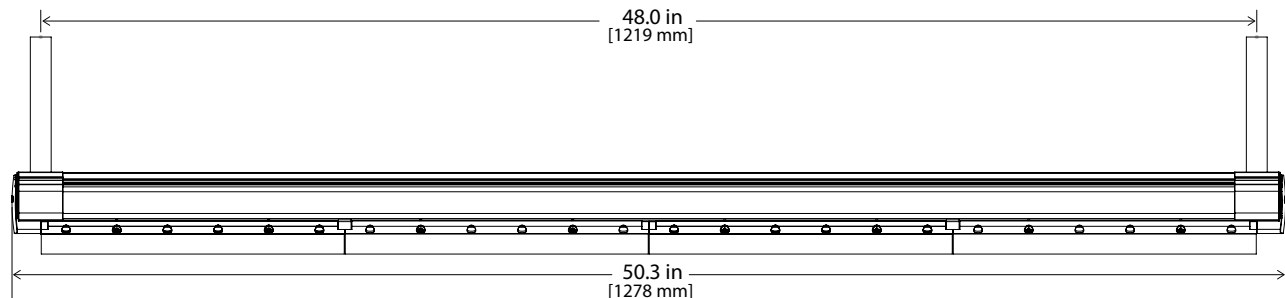


SUSPENSION EYELET



End caps, one on each end, adds 2.3in to the overall length

PENDANT



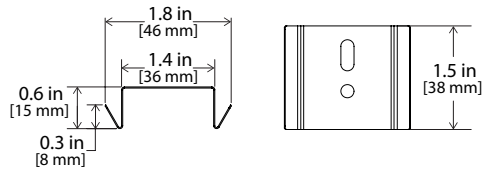
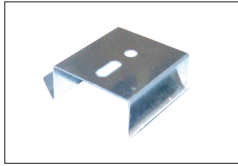
8ft maximum spacing between suspension points (eyelet or pendant)

C7RND

LED LINEAR LIGHTING, HIGH LUMEN
INTEGRAL POWER SYSTEM

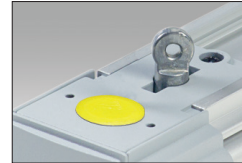
MOUNTING HARDWARE

SURFACE MOUNT CLIP (C7A-DC)

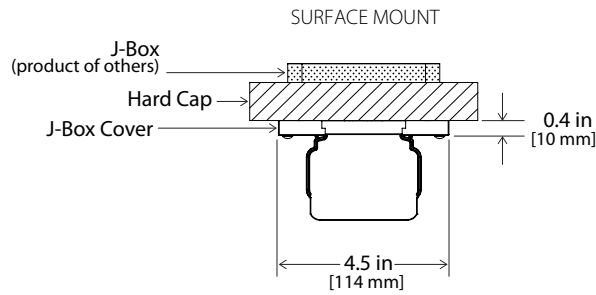
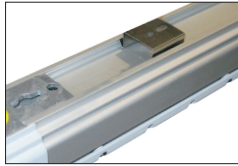


SUSPENSION EYELET (C7A-SE)

Fixed Suspension Spacing
(Chain or cable by others)



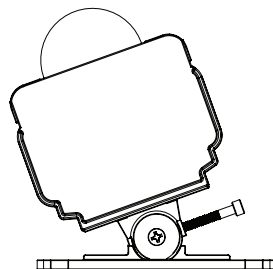
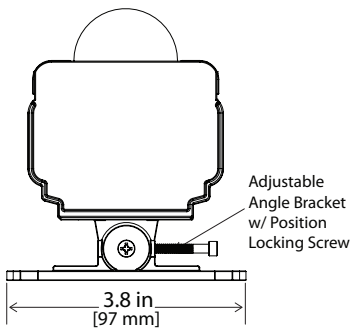
Surface Mount



Variable Suspension Spacing (S-hook and chain or cable by others)



ADJUSTABLE SURFACE MOUNT (PA7)

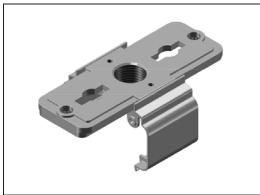


C7RND

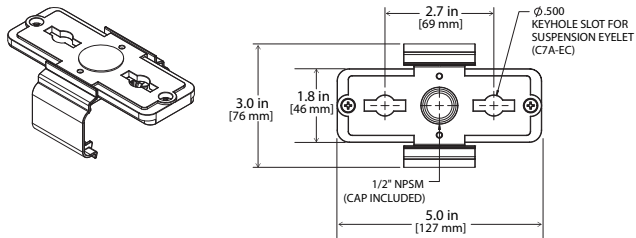
LED LINEAR LIGHTING, HIGH LUMEN
INTEGRAL POWER SYSTEM

MOUNTING HARDWARE (CONTINUED)

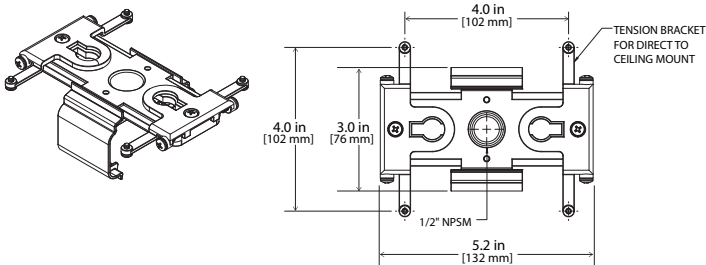
CONTINUOUS RUN JOINER (C7A-CR)



C7A-CR Pendant



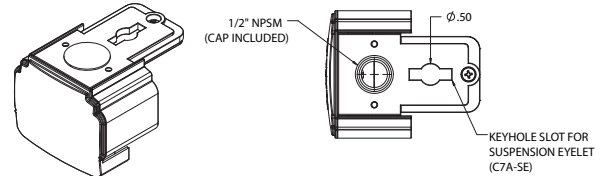
C7A-CRC Surface



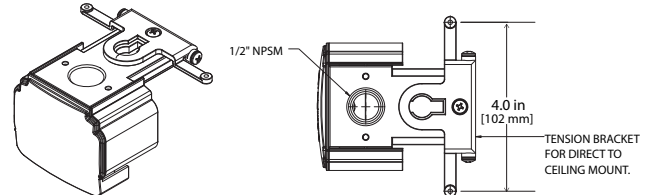
END CAP (C7A-EC-LG)



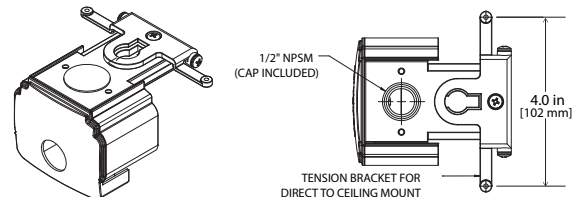
C7A-EC-LG Pendant



C7A-ECC-LG Surface



C7A-ECCMOD-LG Surface with end knock-out



Tempo products and technologies are protected under one or more US and International patents.

Tempo reserves the right to change materials or modify the design of its product without notification as part of the company's continuing product improvement program. Please consult www.tempolc.com for the most up-to-date specifications and technical data.