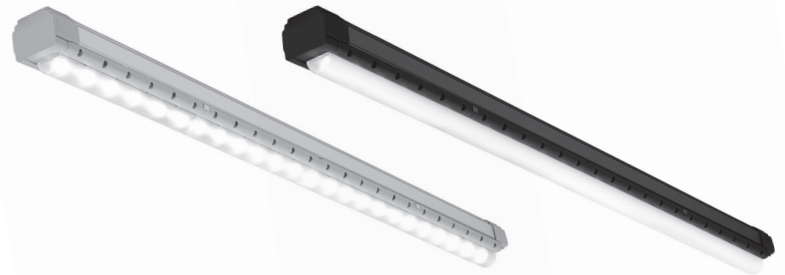


## C7RND

LED LINEAR LIGHTING, HIGH LUMEN  
INTEGRAL POWER SYSTEM



### APPLICATION

The C7RND LED Linear Lighting System is designed with Tempo's CLIP<sup>®</sup> (Configurable Lighting Platform) providing options to suit multiple applications - from wall washing and wall grazing to direct ambient illumination. Individual units from 2ft to 8ft may be joined to form linear runs, reducing the number of power feeds required during installation.

### CONSTRUCTION

- Extruded aluminum housing available in natural anodized finish or powdercoated
- Cast aluminum light modules, joiners and end caps
- Individual fixture lengths of 2ft, 3ft, 4ft, 5ft, 6ft, 7ft or 8ft lengths may be joined to form extended linear runs
- Mounting options for sensors available
- CSA damp location listed

### OPTICS / LENS / DIFFUSER

- ½ Round lightly frosted lens available with optional high diffusion film for higher lens uniformity and visual comfort
- 35° optics for targeted light distribution
- High-angle glare reducing micro-baffle available with optional ½ round lightly frosted lens

### POWER SYSTEM

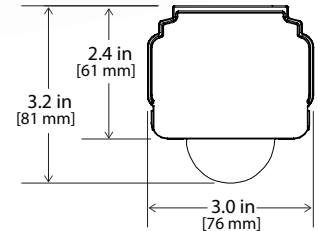
- Integral driver mounts to spring loaded aluminum carrier to maintain thermal contact with heat dissipating housing and to isolate from LED light engine increasing component life
- Single circuit and dual circuit configurations available
- Dimming options available, compatible with remote motion sensor control

### PERFORMANCE

- Lumen packages range from a nominal 570 to 1050 lumens per foot based on watts per foot selection
- Dense Pack (DP) LED spacing option provides higher luminaire lens uniformity with an increased number of LEDs per foot than Standard (ST) LED spacing. The delivered lumens and power consumption are nominally equivalent with Dense Pack or Standard LED Spacing selection.
- Operating temperature range of -20°C to 50°C
- Rated for a minimum of 86,000 hours (L85) at 25°C ambient operating temperature
- Power Supply Total Harmonic Distortion <20%, Power Factor >0.9

### LIGHT CHARACTERISTICS

- 2200K, 2700K, 3000K, 3500K, 4000K and 4500K Color Temperature options
- Typical CRI of 80+, 90+ CRI option available with 2700K, 3000K or 3500K selection
- LED's are selected and placed on the printed circuit boards via Tempo Industries' UniBin process which ensures consistent hue and color within the entire installation. Color variations are held to a minimum, within a 2-step MacAdam ellipse.



### WARRANTY

Tempo provides a 5-year limited warranty.



### PERFORMANCE SUMMARY All data nominal.

Watts/ft	11 (DLF)	11 (3535)	11 (BF)	11 (BFL)
Lumens/ft	1050	950	640	570
Lumens/Watt	95	86	58	52
Maximum Run Length*	80	80	80	80

\*Based on 120V per foot.

## C7RND

LED LINEAR LIGHTING, HIGH LUMEN  
INTEGRAL POWER SYSTEM

### ORDERING INFORMATION

Example: **C7RND-DLF-00-UNVE8-27-NA**

C7R Industrial, Half Round lens +high diffusion film, 120-277V, ELV Dimming down to 5%, 8 W/Ft, 2700K, Natural Anodized finish

### STANDARD LED SPACING

C7	R	ND								
Series	Platform	Fixture Attribute	Optic/Lens/Diffuser	Module Spacing	Voltage	Dimming	Watts/Foot	Color Temp	Finish	Fixture Length <sup>1</sup>
C7	R Rigid	ND Industrial	<b>DLF</b> Half Round lens + high diffusion film  <b>3535</b> Half Round lens + 35°x35° optic  <b>BF</b> Baffle <b>BFL</b> Baffle + lens	00 0"	<b>UNV</b> 120-277V  <b>120</b> 120V	<b>N<sup>2</sup></b> Non-dimming  <b>ED<sup>2</sup></b> eldoLED 0-10V Dimming (1%)  <b>ED1<sup>2</sup></b> eldoLED 0-10V Logarithmic Dimming (1%)  <b>ES<sup>2</sup></b> Lutron Hi-lume 1% EcoSystem® LED driver-L3DAE  <b>E<sup>2</sup></b> ELV (Electronic Low Voltage) dim to 5%  <b>T<sup>3</sup></b> Lutron HiLume® 1% Triac 2-wire LED driver (120V forward phase) -LTEA2W  <b>Z<sup>3</sup></b> 0-10V Dimming (10%)  <b>ET<sup>3</sup></b> ELV and Triac Dimmers dim to zero (0%)	11 11 W/ft	<b>22</b> 2200K <b>27</b> 2700K <b>30</b> 3000K <b>35</b> 3500K <b>40</b> 4000K <b>45</b> 4500K <b>27H</b> 2700K High CRI (90+) <b>30H</b> 3000K High CRI (90+) <b>35H</b> 3500K High CRI (90+)	<b>NA</b> Natural Anodized (Std)  <b>BK</b> Black Anodized  <b>WH</b> White  <b>CC</b> Paint to match color chip	

NOTES:

- (1) Fixture length measured in feet. No decimals used (example - 1.5ft will be 15).
- (2) UNV (120-277V)
- (3) 120 (120V) only

## C7RND

LED LINEAR LIGHTING, HIGH LUMEN  
INTEGRAL POWER SYSTEM

### SYSTEM INTEGRATION ACCESSORIES

SURGE SUPPRESSION DEVICE <small>A Tempo furnished surge suppression device must be installed on each supplying branch circuit to comply with Tempo's 5-year warranty terms</small>		
	<b>SSD-120</b>	120V Branch Circuit
	<b>SSD-277</b>	277V Branch Circuit

END CAPS <small>Two required per run</small>		
	<b>C7A-EC-LG</b>	End Cap with top knock-out, light gray
	<b>C7A-ECC-LG</b>	End Cap for surface mount, light gray
	<b>C7A-ECCMOD-LG</b>	End Cap with end knock-out, light gray

CONTINUOUS RUN JOINERS <small>One required per two joined sections</small>		
	<b>C7A-CR</b>	Continuous Run Joiner
	<b>C7A-CRC</b>	Continuous Run Joiner for surface mount

MOUNTING HARDWARE		
	<b>C7A-JB</b>	J-Box cover, White
	<b>C7A-HP-XX</b>	Hang Straight Pendant Assembly, Indicate Stem length (XX-inches), White
	<b>C7A-RP-XX</b>	Rigid Pendant Assembly, Indicate Stem length (XX-inches), White
	<b>C7A-DC</b>	Surface Mount Clip for variable suspension spacing, no finish
	<b>C7A-SE</b>	Suspension Eyelet for fixed suspension spacing, no finish
	<b>PA7</b>	*/- 50° adjustable bracket for surface mounting. Minimum of 2 required per section.

MICROBAFFLE (40)

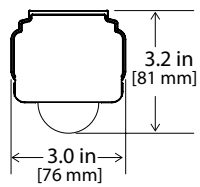


## C7RND

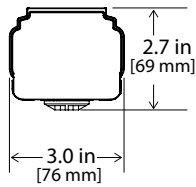
LED LINEAR LIGHTING, HIGH LUMEN  
INTEGRAL POWER SYSTEM

### DIMENSIONAL INFORMATION

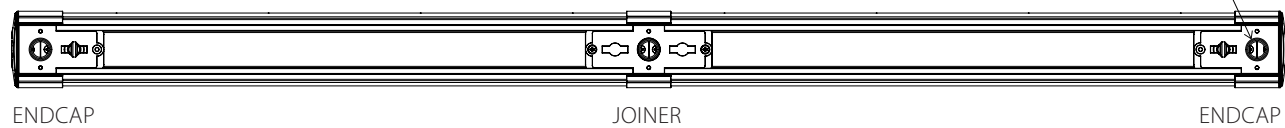
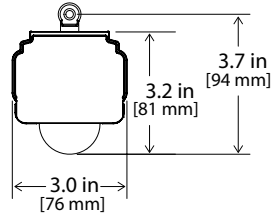
1/2 ROUND LENS



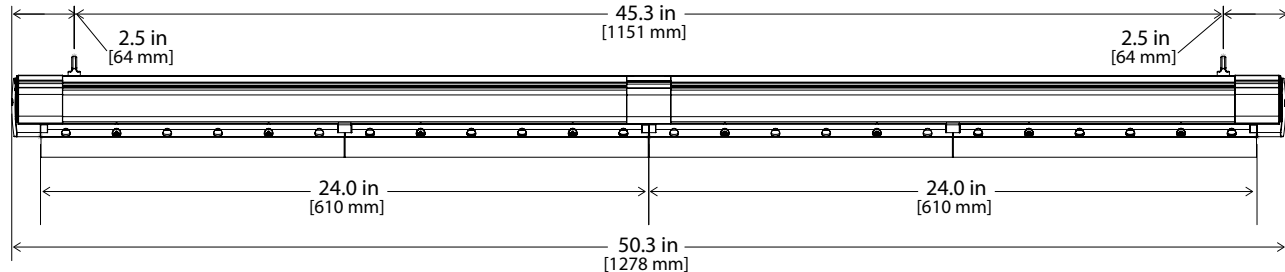
MICROBAFFLE



SUSPENSION EYELET

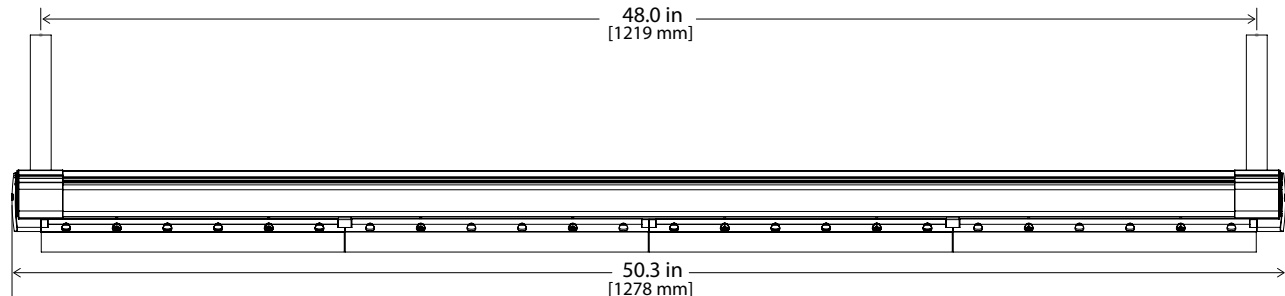


SUSPENSION EYELET



End caps, one on each end, adds 2.3in to the overall length

PENDANT



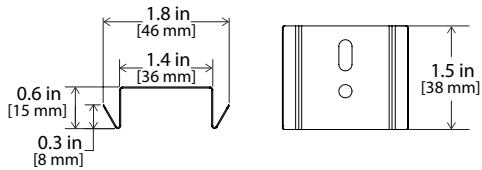
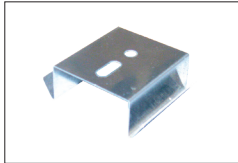
8ft maximum spacing between suspension points (eyelet or pendant)

## C7RND

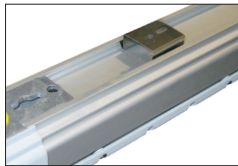
LED LINEAR LIGHTING, HIGH LUMEN  
INTEGRAL POWER SYSTEM

### MOUNTING HARDWARE

#### SURFACE MOUNT CLIP (C7A-DC)



Surface Mount

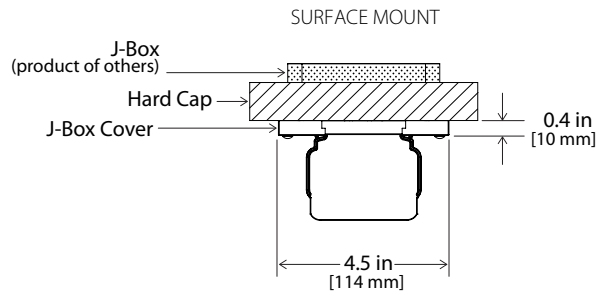


Variable Suspension Spacing  
(S-hook and chain or cable by others)

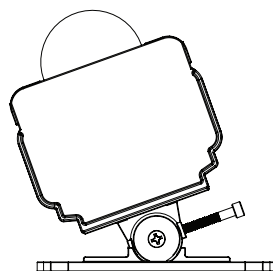
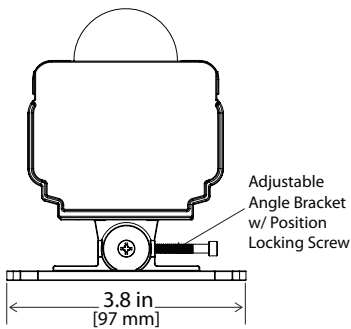


#### SUSPENSION EYELET (C7A-SE)

Fixed Suspension Spacing  
(Chain or cable by others)



#### ADJUSTABLE SURFACE MOUNT (PA7)

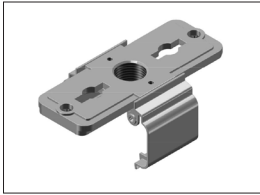


## C7RND

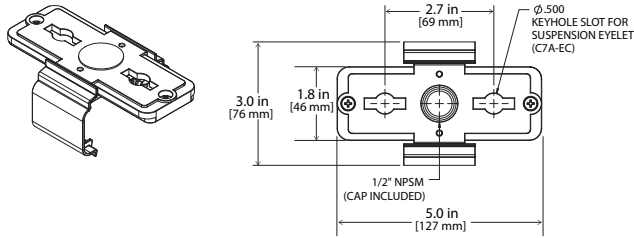
LED LINEAR LIGHTING, HIGH LUMEN  
INTEGRAL POWER SYSTEM

### MOUNTING HARDWARE (CONTINUED)

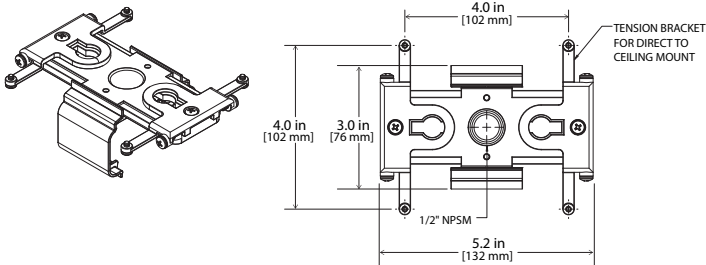
#### CONTINUOUS RUN JOINER (C7A-CR)



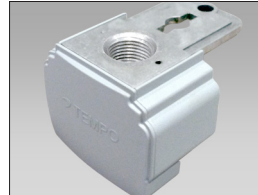
#### C7A-CR Pendant



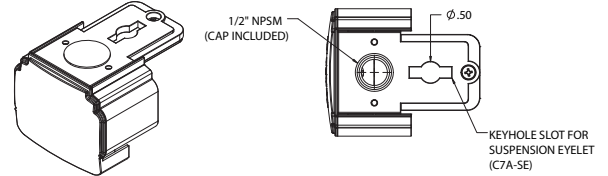
#### C7A-CRC Surface



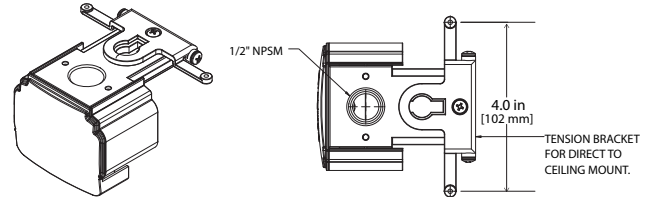
#### END CAP (C7A-EC-LG)



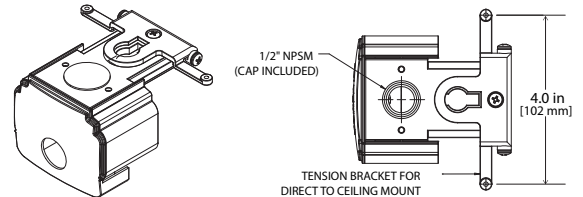
#### C7A-EC-LG Pendant



#### C7A-ECC-LG Surface



#### C7A-ECCMOD-LG Surface with end knock-out



Tempo products and technologies are protected under one or more US and International patents.

Tempo reserves the right to change materials or modify the design of its product without notification as part of the company's continuing product improvement program. Please consult [www.tempolc.com](http://www.tempolc.com) for the most up-to-date specifications and technical data.