

C7R

LED LINEAR LIGHTING, HIGH LUMEN
INTEGRAL POWER SYSTEM



APPLICATION

The C7R LED Linear Lighting System is designed with Tempo's CLiP[®] (Configurable Lighting Platform) providing options to suit multiple applications - from wall washing and wall grazing to direct ambient illumination. Individual units from 2ft to 8ft may be joined to form linear runs, reducing the number of power feeds required during installation.

CONSTRUCTION

- Extruded aluminum housing available in natural anodized finish or powdercoated
- Cast aluminum light modules, joiners and end caps
- Individual fixture lengths of 2ft, 3ft, 4ft, 5ft, 6ft, 7ft or 8ft lengths may be joined to form extended linear runs
- Mounting options for sensors available
- CSA damp location listed

OPTICS / LENS / DIFFUSER

- ½ Round lightly frosted lens available with optional high diffusion film for higher lens uniformity and visual comfort
- 35° optics for targeted light distribution
- High-angle glare reducing micro-baffle available with optional ½ round lightly frosted lens

POWER SYSTEM

- Integral driver mounts to spring loaded aluminum carrier to maintain thermal contact with heat dissipating housing and to isolate from LED light engine increasing component life
- Single circuit and dual circuit configurations available
- Dimming options available, compatible with remote motion sensor control

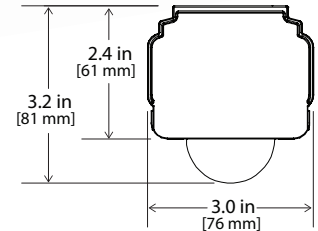
PERFORMANCE

- Lumen packages range from a nominal 570 to 1050 lumens per foot based on watts per foot selection
- Dense Pack (DP) LED spacing option provides higher luminaire lens uniformity with an increased number of LEDs per foot than Standard (ST) LED spacing. The delivered lumens and power consumption are nominally equivalent with Dense Pack or Standard LED Spacing selection.
- Operating temperature range of -20°C to 50°C
- Rated for a minimum of 86,000 hours (L85) at 25°C ambient operating temperature
- Power Supply Total Harmonic Distortion <20%, Power Factor >0.9

LIGHT CHARACTERISTICS

- 2200K, 2700K, 3000K, 3500K, 4000K and 4500K Color Temperature options
- Typical CRI of 80+, 90+ CRI option available with 2700K, 3000K or 3500K selection
- LED's are selected and placed on the printed circuit boards via Tempo Industries' UniBin process which ensures consistent hue and color within the entire installation. Color variations are held to a minimum, within a 2-step MacAdam ellipse.

SEE SEPARATE SPEC SHEET FOR DLC QUALIFIED C7R.



WARRANTY

Tempo provides a 5-year limited warranty.



PERFORMANCE SUMMARY All data nominal.

Watts/ft	8 (21 Optic)	11 (21 Optic)	11 (33 Optic)	11 (40 Optic)	11 (41 Optic)
Lumens/ft	750	1050	950	640	570
Lumens/Watt	95	95	86	58	52
Maximum Run Length*	125ft	80	80	80	80

*Based on 120V per foot.

C7R

LED LINEAR LIGHTING, HIGH LUMEN
INTEGRAL POWER SYSTEM

ORDERING INFORMATION

Example: 32ft C7R00-12-4012-120E8-ST27S-NA

32 feet of C7R00-12, 1/2 round lens +12° optic, 12" on center, 120V, ELV dimming, 8 W/Ft, Standard LED Spacing, 2700K, Std UniBin CRI, Natural Anodized

STANDARD LED SPACING

	C7	R	0	0	12		12				ST				
Length in Feet ¹	PLATFORM				PERFORMANCE						LIGHT CHARACTERISTICS				
	Series	Platform	Profile	Type	Increment Length	Optic/Lens/Diffuser	Module Spacing	Voltage	Dimming	Watts/Foot	LED Spacing	Color Temp	Attribute	Finish	
	C7	R	Rigid	0 Rect.	0 Symmetric	12 12" base increment	21 1/2 Round lens, + high diffusion film	12 12"	UNV 120-277V	N Non-dimming ED EldoLED 0-10V Dimming (1%) ED1 EldoLED 0-10V Dimming (1%) (for use with Lutron controls system) ES Lutron Hi-lume 1% EcoSystemLED driver-L3DAE E ELV (Electronic Low Voltage)	8 8 W/ft 11 11 W/ft	ST Standard	22 2200K 27 2700K 30 3000K 35 3500K 40 4000K 45 4500K	S Standard UniBin C High CRI (90+) 2700K, 3000K, 3500K only	NA Natural Anodized (Std) BK Black Anodized WH White SPL Special Color - Consult Factory
								120 120V	T Lutron HiLume 1% 2-wire LED driver (120V forward phase) -LTEA2W Z 0-10V Dimming (10%) ET ELV and Triac Dimmers dim to zero (0%)						

C7R

LED LINEAR LIGHTING, HIGH LUMEN
INTEGRAL POWER SYSTEM

ORDERING INFORMATION

Example: 32ft C7R00-12-2112-UNVZ11-DP27S-NA

32 feet of C7R00-12, 1/2 round lens + high diffusion film, 12" on center, 120V-277V, 0-10V dimming, 11 W/Ft, Dense Pack LED Spacing, 2700K, Std UniBin CRI, Natural Anodized

DENSE PACK (HIGH UNIFORMITY) LED SPACING

	C7	R	0	0	12	21	12			11	DP			
Length in Feet ¹	PLATFORM				PERFORMANCE						LIGHT CHARACTERISTICS			
	Series	Platform	Profile	Type	Increment Length	Optic/Lens/Diffuser	Module Spacing	Voltage	Dimming	Watts/Foot	LED Spacing	Color Temp	Attribute	Finish
	C7	R Rigid	0 Rect.	0 Symmetric	12 12" base increment	21 1/2 Round lens, + high diffusion film	12 12"	UNV 120-277V	N Non-dimming Z 0-10V Dimming (10%) ES Hi-lume 1% EcoSystemLED driver Lutron-L3DAE	11 11 W/ft	DP Dense Pack	22 2200K 27 2700K 30 3000K 35 3500K 40 4000K	S Standard UniBin C High CRI (90+) 2700K, 3000K, 3500K only	NA Natural Anodized (Std) BK Black Anodized WH White SPL Special Color - Consult Factory
								120 120V	T HiLume 1% 2-wire LED driver (120V forward phase) Lutron-LTEA2W					

C7R

LED LINEAR LIGHTING, HIGH LUMEN
INTEGRAL POWER SYSTEM

SYSTEM INTEGRATION ACCESSORIES

SURGE SUPPRESSION DEVICE A Tempo furnished surge suppression device must be installed on each supplying branch circuit to comply with Tempo's 5-year warranty terms		
	SSD-120	120V Branch Circuit
	SSD-277	277V Branch Circuit

END CAPS Two required per run		
	C7A-EC-LG	End Cap with top knock-out, light gray
	C7A-ECC-LG	End Cap for surface mount, light gray
	C7A-ECCMOD-LG	End Cap with end knock-out, light gray

CONTINUOUS RUN JOINERS One required per two joined sections		
	C7A-CR	Continuous Run Joiner
	C7A-CRC	Continuous Run Joiner for surface mount

MOUNTING HARDWARE		
	C7A-JB	J-Box cover, White
	C7A-HP-XX	Hang Straight Pendant Assembly, Indicate Stem length (XX-inches), White
	C7A-RP-XX	Rigid Pendant Assembly, Indicate Stem length (XX-inches), White
	C7A-DC	Surface Mount Clip for variable suspension spacing, no finish
	C7A-SE	Suspension Eyelet for fixed suspension spacing, no finish
	PA7	*/- 50° adjustable bracket for surface mounting. Minimum of 2 required per section.

MICROBAFFLE (40)

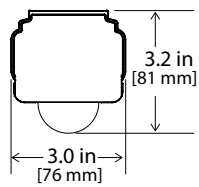


C7R

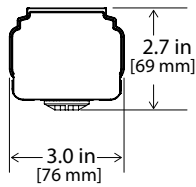
LED LINEAR LIGHTING, HIGH LUMEN
INTEGRAL POWER SYSTEM

DIMENSIONAL INFORMATION

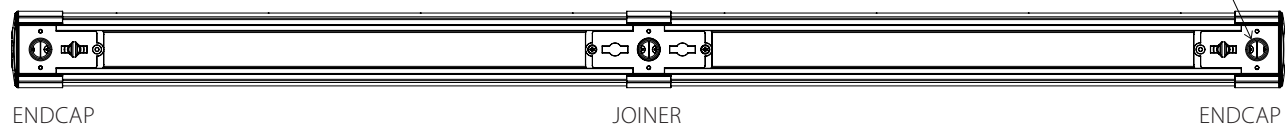
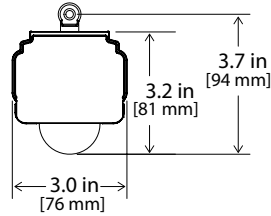
1/2 ROUND LENS



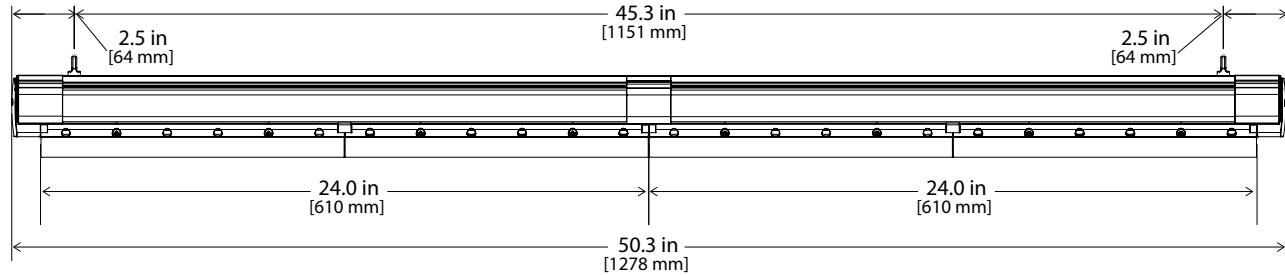
MICROBAFFLE



SUSPENSION EYELET

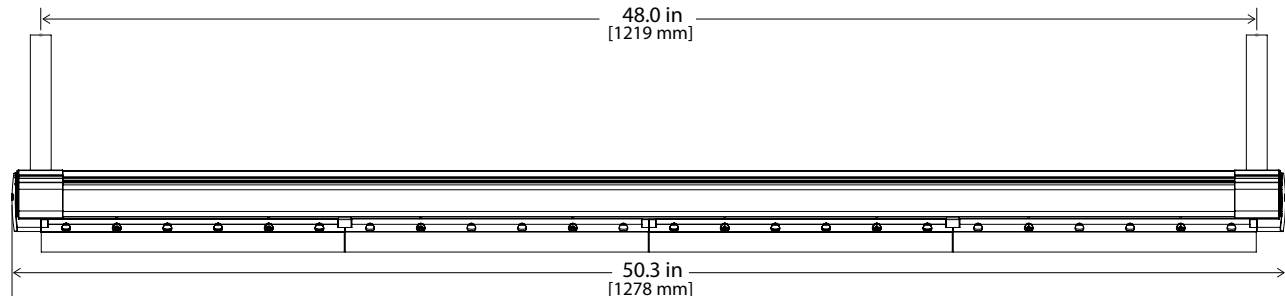


SUSPENSION EYELET



End caps, one on each end, adds 2.3in to the overall length

PENDANT



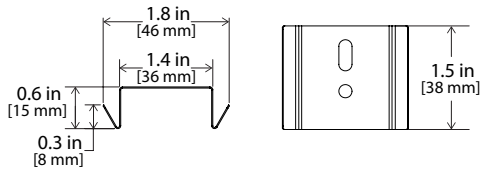
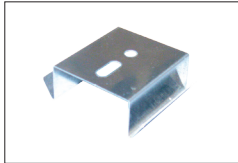
8ft maximum spacing between suspension points (eyelet or pendant)

C7R

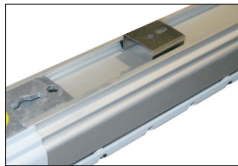
LED LINEAR LIGHTING, HIGH LUMEN
INTEGRAL POWER SYSTEM

MOUNTING HARDWARE

SURFACE MOUNT CLIP (C7A-DC)



Surface Mount

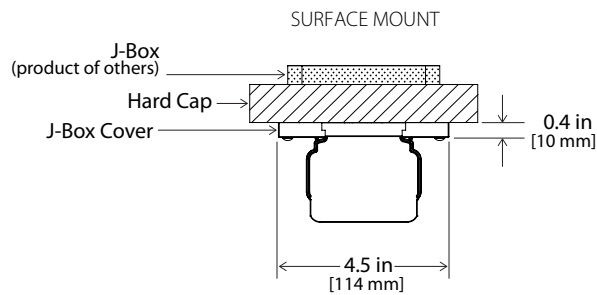


Variable Suspension Spacing
(S-hook and chain or cable by others)

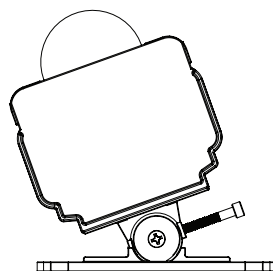
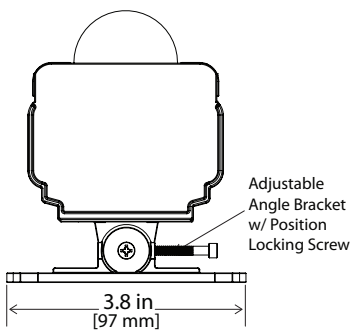


SUSPENSION EYELET (C7A-SE)

Fixed Suspension Spacing
(Chain or cable by others)



ADJUSTABLE SURFACE MOUNT (PA7)

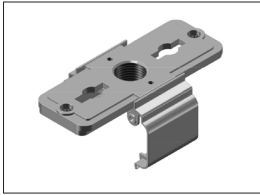


C7R

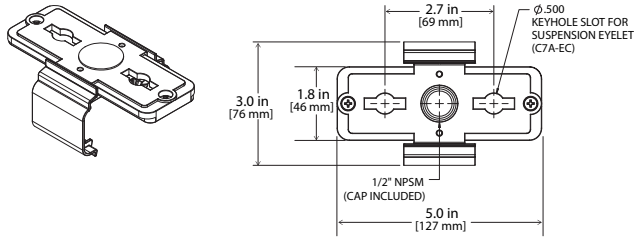
LED LINEAR LIGHTING, HIGH LUMEN
INTEGRAL POWER SYSTEM

MOUNTING HARDWARE (CONTINUED)

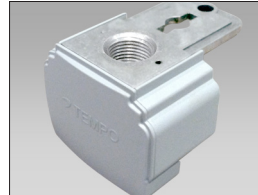
CONTINUOUS RUN JOINER (C7A-CR)



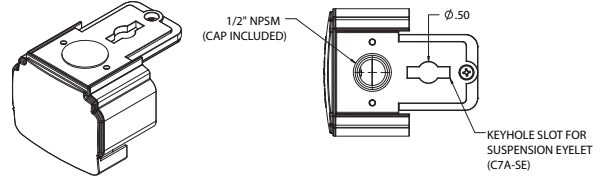
C7A-CR Pendant



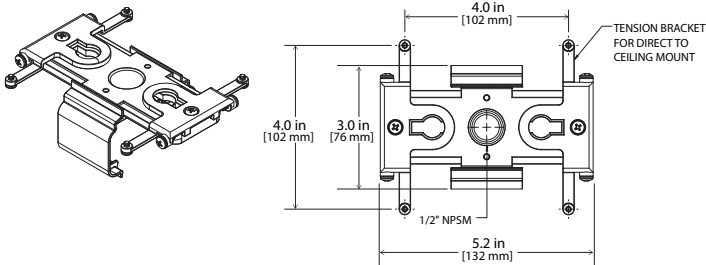
END CAP (C7A-EC-LG)



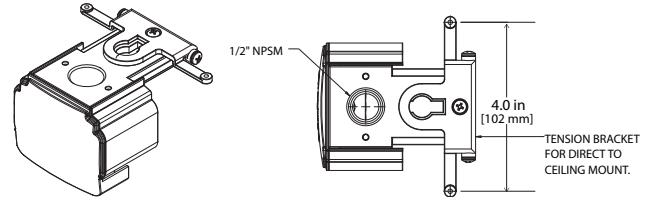
C7A-EC-LG Pendant



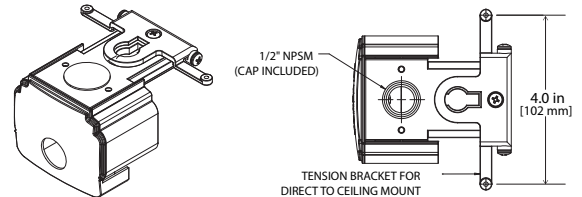
C7A-CRC Surface



C7A-ECC-LG Surface



C7A-ECCMOD-LG Surface with end knock-out



Tempo products and technologies are protected under one or more US and International patents.

Tempo reserves the right to change materials or modify the design of its product without notification as part of the company's continuing product improvement program. Please consult www.tempolc.com for the most up-to-date specifications and technical data.