

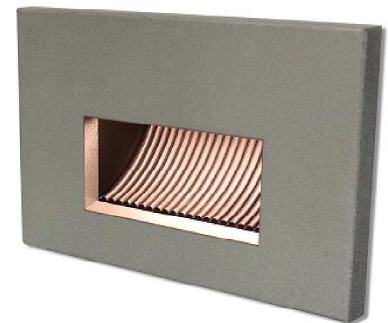
IES INDOOR REPORT
PHOTOMETRIC FILENAME : SPL-ST-1203-35WH.IES

DESCRIPTION INFORMATION (From Photometric File)

IESNA:LM-63-2002
 [TEST] 3232
 [ECN] 3194
 [TESTLAB] Tempo LLC
 [ISSUE DATE] 9/21/2017 11:32:32 AM
 [MANUFAC] Tempo LLC
 [LUMCAT] SPL-ST-1203-35WH
 [LUMINAIRE] White aluminum housing and coverplate with frosted lens
 [LAMP] Four (4) white LEDs (3500K)
 [ELECTRICALS] 120.08 VDC, 0.02 A, 0.9758 PF, 13% ATHD

CHARACTERISTICS

Lumens Per Lamp	N.A. (absolute)
Total Lamp Lumens	N.A. (absolute)
Luminaire Lumens	83
Total Luminaire Efficiency	N.A.
Luminaire Efficacy Rating (LER)	30
Total Luminaire Watts	2.75
Ballast Factor	1.00
CIE Type	Semi-Direct
Spacing Criterion (0-180)	153.80
Spacing Criterion (90-270)	N.A.
Spacing Criterion (Diagonal)	97.00
Basic Luminous Shape	Vertical Rectangle
Luminous Length (0-180)	0.00 ft
Luminous Width (90-270)	0.21 ft
Luminous Height	0.09 ft



LUMINANCE DATA (cd/sq.m)

Angle In Degrees	Average 0-Deg	Average 45-Deg	Average 90-Deg
45	0	28305	0
55	0	22428	0
65	0	18200	0
75	0	15085	0
85	0	12891	0

IES INDOOR REPORT
PHOTOMETRIC FILENAME : SPL-ST-1203-35WH.IES

CANDELA TABULATION

	<u>0</u>	<u>5</u>	<u>10</u>	<u>15</u>	<u>20</u>	<u>25</u>	<u>30</u>	<u>35</u>	<u>40</u>	<u>45</u>
0.0	0.00	0.00	0.00	0.00	0.00	0.00	0.00	0.00	0.00	0.00
2.5	0.22	0.22	0.22	0.22	0.20	0.19	0.17	0.16	0.15	0.12
5.0	0.62	0.62	0.62	0.59	0.57	0.54	0.50	0.46	0.42	0.37
7.5	1.04	1.04	1.02	0.99	0.95	0.91	0.86	0.80	0.73	0.65
10.0	1.50	1.50	1.47	1.43	1.38	1.31	1.24	1.15	1.04	0.94
12.5	2.81	2.80	2.58	2.31	2.04	1.80	1.64	1.52	1.39	1.25
15.0	6.04	6.02	5.67	5.28	4.71	4.06	3.35	2.46	1.85	1.58
17.5	10.67	10.63	10.01	9.27	8.45	7.17	6.02	4.89	3.77	2.61
20.0	16.81	16.74	15.85	14.79	13.39	11.70	9.86	8.02	6.28	4.71
22.5	23.26	23.14	22.13	20.90	19.23	17.13	14.80	12.28	9.70	7.25
25.0	28.60	28.26	27.55	26.42	24.81	22.65	20.08	17.03	13.82	10.57
27.5	32.13	31.80	31.23	30.38	29.09	27.08	24.62	21.60	18.09	14.30
30.0	33.92	33.64	33.24	32.63	31.58	30.03	27.94	25.29	21.99	18.08
32.5	34.58	34.32	34.03	33.64	32.72	31.46	29.87	27.80	24.87	21.33
35.0	34.61	34.38	34.16	33.87	33.01	32.03	30.75	29.01	26.68	23.75
37.5	34.42	34.20	34.02	33.65	32.94	32.09	30.96	29.44	27.51	25.08
40.0	33.95	33.75	33.62	33.23	32.60	31.92	30.77	29.35	27.73	25.72
42.5	33.24	33.11	33.05	32.63	32.11	31.39	30.36	29.07	27.59	25.86
45.0	32.69	32.54	32.46	32.01	31.53	30.76	29.80	28.66	27.20	25.70
47.5	31.86	31.76	31.75	31.29	30.94	30.10	29.17	28.11	26.80	25.33
50.0	31.06	30.99	30.88	30.52	30.03	29.38	28.54	27.47	26.23	24.77
52.5	30.62	30.49	30.31	29.97	29.34	28.66	27.81	26.67	25.60	24.23
55.0	30.18	30.09	29.86	29.52	28.86	28.08	27.16	26.02	24.92	23.59
57.5	29.68	29.63	29.40	28.99	28.41	27.57	26.64	25.49	24.20	22.90
60.0	29.17	29.14	28.93	28.47	27.96	27.14	26.10	24.98	23.64	22.23
62.5	28.65	28.65	28.41	27.99	27.34	26.64	25.61	24.46	23.15	21.70
65.0	28.03	28.02	27.80	27.42	26.76	26.04	25.10	23.94	22.66	21.18
67.5	27.20	27.29	27.05	26.71	26.16	25.33	24.49	23.34	22.08	20.66
70.0	26.45	26.42	26.28	25.83	25.35	24.63	23.73	22.72	21.51	20.08
72.5	25.58	25.61	25.43	25.05	24.49	23.82	22.95	21.99	20.80	19.44
75.0	24.68	24.78	24.60	24.22	23.65	22.97	22.15	21.20	20.03	18.71
77.5	23.98	24.07	23.81	23.46	22.92	22.21	21.40	20.41	19.31	18.07
80.0	23.35	23.38	23.21	22.79	22.25	21.55	20.65	19.78	18.66	17.43
82.5	22.81	22.84	22.68	22.26	21.67	21.01	20.17	19.20	18.03	16.75
85.0	22.61	22.55	22.36	21.90	21.40	20.60	19.70	18.77	17.68	16.49
87.5	22.67	22.56	22.33	21.86	21.30	20.53	19.73	18.73	17.56	16.30
90.0	22.77	22.74	22.50	22.02	21.42	20.58	19.70	18.63	17.39	16.05
92.5	23.08	22.98	22.72	22.27	21.65	20.81	19.92	18.83	17.57	16.20
95.0	23.21	23.13	22.87	22.41	21.78	20.95	20.06	18.97	17.67	16.26
97.5	23.16	23.06	22.84	22.37	21.77	20.92	20.01	18.92	17.68	16.29
100.0	22.95	23.00	22.71	22.25	21.61	20.79	19.90	18.79	17.51	16.06
102.5	22.76	22.74	22.44	22.04	21.37	20.60	19.66	18.57	17.30	15.79
105.0	22.44	22.41	22.16	21.72	21.05	20.27	19.34	18.22	16.91	15.45
107.5	21.97	22.02	21.79	21.31	20.68	19.87	18.95	17.81	16.52	15.02
110.0	21.52	21.57	21.28	20.77	20.21	19.39	18.47	17.32	16.01	14.46
112.5	20.96	21.01	20.71	20.27	19.64	18.82	17.90	16.73	15.42	13.90
115.0	20.30	20.34	20.11	19.64	19.01	18.22	17.25	16.13	14.80	13.31
117.5	19.60	19.63	19.39	18.96	18.29	17.53	16.56	15.44	14.11	12.68
120.0	18.84	18.89	18.63	18.16	17.58	16.79	15.79	14.73	13.44	12.03
122.5	17.99	18.03	17.81	17.38	16.79	15.96	15.08	13.97	12.71	11.39
125.0	17.07	17.13	16.93	16.49	15.90	15.13	14.25	13.19	12.02	10.75
127.5	16.18	16.22	16.02	15.59	15.00	14.29	13.42	12.39	11.33	10.12
130.0	15.21	15.25	15.06	14.66	14.11	13.43	12.56	11.64	10.64	9.45
132.5	14.19	14.24	14.08	13.76	13.18	12.56	11.73	10.87	9.91	8.87

IES INDOOR REPORT
PHOTOMETRIC FILENAME : SPL-ST-1203-35WH.IES

CANDELA TABULATION - (Cont.)

135.0	13.24	13.27	13.12	12.77	12.26	11.65	10.94	10.12	9.20	8.25
137.5	12.26	12.28	12.14	11.81	11.40	10.80	10.14	9.38	8.53	7.65
140.0	11.27	11.28	11.16	10.88	10.48	9.94	9.35	8.64	7.88	7.05
142.5	10.33	10.34	10.23	9.98	9.62	9.14	8.57	7.98	7.23	6.46
145.0	9.42	9.43	9.32	9.11	8.76	8.33	7.82	7.23	6.59	5.91
147.5	8.52	8.52	8.44	8.22	7.93	7.54	7.07	6.54	5.97	5.36
150.0	7.62	7.63	7.55	7.37	7.11	6.78	6.35	5.88	5.38	4.82
152.5	6.78	6.78	6.71	6.55	6.33	6.02	5.66	5.25	4.79	4.28
155.0	5.95	5.95	5.89	5.75	5.55	5.29	4.99	4.62	4.21	3.78
157.5	5.14	5.17	5.08	4.97	4.80	4.59	4.32	4.00	3.65	3.27
160.0	4.39	4.41	4.34	4.24	4.09	3.90	3.67	3.41	3.12	2.88
162.5	3.64	3.66	3.60	3.52	3.43	3.25	3.08	2.93	2.80	2.67
165.0	3.00	3.01	2.98	2.94	2.89	2.83	2.78	2.67	2.52	2.28
167.5	2.70	2.71	2.66	2.62	2.54	2.45	2.33	2.18	2.02	1.84
170.0	2.09	2.10	2.06	2.02	1.96	1.88	1.78	1.67	1.54	1.41
172.5	1.47	1.48	1.45	1.42	1.39	1.32	1.26	1.18	1.08	0.98
175.0	0.89	0.89	0.90	0.86	0.83	0.80	0.76	0.71	0.65	0.58
177.5	0.33	0.33	0.33	0.34	0.31	0.29	0.27	0.25	0.24	0.19
180.0	0.00	0.00	0.00	0.00	0.00	0.00	0.00	0.00	0.00	0.00

Vert. Angles **Horizontal Angles**

	<u>50</u>	<u>55</u>	<u>60</u>	<u>65</u>	<u>70</u>	<u>75</u>	<u>80</u>	<u>85</u>	<u>90</u>	<u>95</u>
0.0	0.00	0.00	0.00	0.00	0.00	0.00	0.00	0.00	0.00	0.00
2.5	0.10	0.09	0.06	0.05	0.03	0.02	0.01	0.00	0.00	0.00
5.0	0.32	0.27	0.21	0.16	0.11	0.06	0.03	0.01	0.00	0.00
7.5	0.57	0.49	0.40	0.31	0.22	0.14	0.06	0.02	0.00	0.00
10.0	0.85	0.72	0.60	0.46	0.35	0.21	0.10	0.03	0.00	0.00
12.5	1.10	0.95	0.79	0.63	0.47	0.30	0.16	0.04	0.00	0.00
15.0	1.39	1.21	1.01	0.81	0.61	0.41	0.21	0.06	0.00	0.00
17.5	1.79	1.48	1.23	0.99	0.76	0.51	0.28	0.08	0.00	0.00
20.0	3.22	1.95	1.47	1.18	0.89	0.61	0.36	0.10	0.00	0.00
22.5	5.15	3.34	1.83	1.37	1.04	0.71	0.41	0.14	0.00	0.00
25.0	7.52	5.02	3.00	1.63	1.19	0.83	0.48	0.15	0.00	0.00
27.5	10.56	7.14	4.42	2.28	1.35	0.94	0.54	0.18	0.00	0.00
30.0	13.85	9.70	6.09	3.36	1.55	1.06	0.61	0.21	0.00	0.00
32.5	17.09	12.56	8.04	4.51	2.03	1.15	0.68	0.24	0.00	0.00
35.0	19.87	15.21	10.26	5.94	2.86	1.29	0.75	0.27	0.00	0.00
37.5	21.90	17.74	12.53	7.69	3.77	1.48	0.82	0.30	0.00	0.00
40.0	23.13	19.46	14.65	9.30	4.75	1.81	0.91	0.34	0.00	0.00
42.5	23.65	20.67	16.46	11.03	5.87	2.35	0.97	0.37	0.00	0.00
45.0	23.81	21.36	17.68	12.48	7.05	2.96	1.05	0.40	0.00	0.00
47.5	23.64	21.36	18.20	13.60	8.19	3.59	1.15	0.43	0.00	0.00
50.0	23.23	21.19	18.36	14.40	9.27	4.33	1.28	0.46	0.00	0.00
52.5	22.71	20.82	18.25	14.87	10.13	4.90	1.56	0.50	0.00	0.00
55.0	22.10	20.35	17.96	14.83	10.53	5.46	1.79	0.53	0.00	0.00
57.5	21.48	19.80	17.56	14.61	10.75	5.98	2.12	0.56	0.00	0.00
60.0	20.86	19.13	17.03	14.30	10.81	6.48	2.35	0.60	0.00	0.00
62.5	20.23	18.46	16.44	13.85	10.68	6.59	2.50	0.65	0.00	0.00
65.0	19.61	17.79	15.87	13.39	10.40	6.55	2.59	0.68	0.00	0.00
67.5	19.07	17.27	15.26	12.89	10.08	6.44	2.67	0.72	0.00	0.00
70.0	18.50	16.73	14.67	12.31	9.62	6.28	2.72	0.75	0.00	0.00
72.5	17.93	16.14	14.06	11.76	9.25	6.11	2.74	0.79	0.00	0.00
75.0	17.31	15.55	13.53	11.30	8.88	5.94	2.76	0.82	0.00	0.00
77.5	16.65	14.93	12.98	10.79	8.49	5.70	2.74	0.85	0.00	0.00
80.0	15.97	14.28	12.38	10.26	8.05	5.45	2.72	0.89	0.00	0.00

IES INDOOR REPORT
PHOTOMETRIC FILENAME : SPL-ST-1203-35WH.IES

CANDELA TABULATION - (Cont.)

82.5	15.29	13.72	11.90	9.84	7.70	5.25	2.73	0.90	0.00	0.00
85.0	15.03	13.42	11.55	9.48	7.40	5.06	2.66	0.91	0.00	0.00
87.5	14.77	13.10	11.20	9.10	7.01	4.81	2.60	0.92	0.00	0.00
90.0	14.46	12.73	10.80	8.68	6.62	4.56	2.53	0.93	0.00	0.00
92.5	14.56	12.77	10.77	8.61	6.50	4.45	2.48	0.93	0.00	0.00
95.0	14.60	12.75	10.69	8.48	6.39	4.34	2.43	0.93	0.00	0.00
97.5	14.62	12.70	10.59	8.34	6.18	4.18	2.38	0.94	0.00	0.00
100.0	14.37	12.46	10.37	8.15	6.00	4.04	2.27	0.94	0.00	0.00
102.5	14.04	12.14	10.07	7.90	5.80	3.90	2.21	0.90	0.00	0.00
105.0	13.68	11.77	9.73	7.62	5.60	3.77	2.14	0.89	0.00	0.00
107.5	13.25	11.36	9.38	7.32	5.39	3.61	2.07	0.87	0.00	0.00
110.0	12.76	10.91	8.99	7.02	5.17	3.46	2.00	0.85	0.00	0.00
112.5	12.24	10.43	8.59	6.73	4.99	3.33	1.95	0.84	0.00	0.00
115.0	11.66	9.94	8.20	6.41	4.75	3.21	1.88	0.82	0.00	0.00
117.5	11.11	9.47	7.78	6.11	4.53	3.07	1.82	0.81	0.00	0.00
120.0	10.54	8.99	7.38	5.82	4.31	2.96	1.75	0.77	0.00	0.00
122.5	9.95	8.53	7.01	5.51	4.10	2.81	1.72	0.75	0.00	0.00
125.0	9.40	8.01	6.58	5.21	3.89	2.67	1.66	0.73	0.00	0.00
127.5	8.85	7.53	6.20	4.91	3.67	2.53	1.64	0.70	0.00	0.00
130.0	8.30	7.07	5.83	4.62	3.46	2.41	1.57	0.67	0.00	0.00
132.5	7.74	6.60	5.46	4.34	3.26	2.28	1.51	0.64	0.00	0.00
135.0	7.22	6.16	5.10	4.05	3.05	2.18	1.43	0.61	0.00	0.00
137.5	6.69	5.71	4.74	3.76	2.84	2.11	1.35	0.57	0.00	0.00
140.0	6.19	5.28	4.38	3.48	2.65	2.03	1.30	0.54	0.00	0.00
142.5	5.66	4.88	4.03	3.23	2.49	1.93	1.20	0.50	0.00	0.00
145.0	5.18	4.43	3.68	2.94	2.38	1.80	1.11	0.47	0.00	0.00
147.5	4.70	4.04	3.33	2.70	2.28	1.66	1.03	0.42	0.00	0.00
150.0	4.22	3.62	3.02	2.55	2.11	1.53	0.94	0.38	0.00	0.00
152.5	3.76	3.22	2.76	2.43	1.93	1.38	0.85	0.34	0.00	0.00
155.0	3.31	2.88	2.60	2.22	1.73	1.24	0.77	0.30	0.00	0.00
157.5	2.93	2.69	2.41	1.98	1.54	1.10	0.68	0.28	0.00	0.00
160.0	2.71	2.47	2.11	1.73	1.34	0.97	0.61	0.22	0.00	0.00
162.5	2.43	2.15	1.81	1.48	1.18	0.83	0.49	0.18	0.00	0.00
165.0	2.04	1.78	1.53	1.24	0.96	0.69	0.40	0.14	0.00	0.00
167.5	1.65	1.44	1.22	1.00	0.77	0.54	0.31	0.11	0.00	0.00
170.0	1.28	1.10	0.94	0.76	0.60	0.40	0.22	0.08	0.00	0.00
172.5	0.88	0.77	0.65	0.52	0.38	0.26	0.13	0.05	0.00	0.00
175.0	0.51	0.43	0.35	0.27	0.19	0.12	0.07	0.04	0.00	0.00
177.5	0.16	0.14	0.10	0.08	0.06	0.05	0.03	0.03	0.00	0.00
180.0	0.00	0.00	0.00	0.00	0.00	0.00	0.00	0.00	0.00	0.00

Vert. Horizontal Angles

	<u>100</u>	<u>105</u>	<u>110</u>	<u>115</u>	<u>120</u>	<u>125</u>	<u>130</u>	<u>135</u>	<u>140</u>	<u>145</u>
0.0	0.00	0.00	0.00	0.00	0.00	0.00	0.00	0.00	0.00	0.00
2.5	0.00	0.00	0.00	0.00	0.00	0.00	0.00	0.00	0.00	0.00
5.0	0.00	0.00	0.00	0.00	0.00	0.00	0.00	0.00	0.00	0.00
7.5	0.00	0.00	0.00	0.00	0.00	0.00	0.00	0.00	0.00	0.00
10.0	0.00	0.00	0.00	0.00	0.00	0.00	0.00	0.00	0.00	0.00
12.5	0.00	0.00	0.00	0.00	0.00	0.00	0.00	0.00	0.00	0.00
15.0	0.00	0.00	0.00	0.00	0.00	0.00	0.00	0.00	0.00	0.00
17.5	0.00	0.00	0.00	0.00	0.00	0.00	0.00	0.00	0.00	0.00
20.0	0.00	0.00	0.00	0.00	0.00	0.00	0.00	0.00	0.00	0.00
22.5	0.00	0.00	0.00	0.00	0.00	0.00	0.00	0.00	0.00	0.00
25.0	0.00	0.00	0.00	0.00	0.00	0.00	0.00	0.00	0.00	0.00
27.5	0.00	0.00	0.00	0.00	0.00	0.00	0.00	0.00	0.00	0.00

IES INDOOR REPORT
PHOTOMETRIC FILENAME : SPL-ST-1203-35WH.IES

CANDELA TABULATION - (Cont.)

30.0	0.00	0.00	0.00	0.00	0.00	0.00	0.00	0.00	0.00	0.00
32.5	0.00	0.00	0.00	0.00	0.00	0.00	0.00	0.00	0.00	0.00
35.0	0.00	0.00	0.00	0.00	0.00	0.00	0.00	0.00	0.00	0.00
37.5	0.00	0.00	0.00	0.00	0.00	0.00	0.00	0.00	0.00	0.00
40.0	0.00	0.00	0.00	0.00	0.00	0.00	0.00	0.00	0.00	0.00
42.5	0.00	0.00	0.00	0.00	0.00	0.00	0.00	0.00	0.00	0.00
45.0	0.00	0.00	0.00	0.00	0.00	0.00	0.00	0.00	0.00	0.00
47.5	0.00	0.00	0.00	0.00	0.00	0.00	0.00	0.00	0.00	0.00
50.0	0.00	0.00	0.00	0.00	0.00	0.00	0.00	0.00	0.00	0.00
52.5	0.00	0.00	0.00	0.00	0.00	0.00	0.00	0.00	0.00	0.00
55.0	0.00	0.00	0.00	0.00	0.00	0.00	0.00	0.00	0.00	0.00
57.5	0.00	0.00	0.00	0.00	0.00	0.00	0.00	0.00	0.00	0.00
60.0	0.00	0.00	0.00	0.00	0.00	0.00	0.00	0.00	0.00	0.00
62.5	0.00	0.00	0.00	0.00	0.00	0.00	0.00	0.00	0.00	0.00
65.0	0.00	0.00	0.00	0.00	0.00	0.00	0.00	0.00	0.00	0.00
67.5	0.00	0.00	0.00	0.00	0.00	0.00	0.00	0.00	0.00	0.00
70.0	0.00	0.00	0.00	0.00	0.00	0.00	0.00	0.00	0.00	0.00
72.5	0.00	0.00	0.00	0.00	0.00	0.00	0.00	0.00	0.00	0.00
75.0	0.00	0.00	0.00	0.00	0.00	0.00	0.00	0.00	0.00	0.00
77.5	0.00	0.00	0.00	0.00	0.00	0.00	0.00	0.00	0.00	0.00
80.0	0.00	0.00	0.00	0.00	0.00	0.00	0.00	0.00	0.00	0.00
82.5	0.00	0.00	0.00	0.00	0.00	0.00	0.00	0.00	0.00	0.00
85.0	0.00	0.00	0.00	0.00	0.00	0.00	0.00	0.00	0.00	0.00
87.5	0.00	0.00	0.00	0.00	0.00	0.00	0.00	0.00	0.00	0.00
90.0	0.00	0.00	0.00	0.00	0.00	0.00	0.00	0.00	0.00	0.00
92.5	0.00	0.00	0.00	0.00	0.00	0.00	0.00	0.00	0.00	0.00
95.0	0.00	0.00	0.00	0.00	0.00	0.00	0.00	0.00	0.00	0.00
97.5	0.00	0.00	0.00	0.00	0.00	0.00	0.00	0.00	0.00	0.00
100.0	0.00	0.00	0.00	0.00	0.00	0.00	0.00	0.00	0.00	0.00
102.5	0.00	0.00	0.00	0.00	0.00	0.00	0.00	0.00	0.00	0.00
105.0	0.00	0.00	0.00	0.00	0.00	0.00	0.00	0.00	0.00	0.00
107.5	0.00	0.00	0.00	0.00	0.00	0.00	0.00	0.00	0.00	0.00
110.0	0.00	0.00	0.00	0.00	0.00	0.00	0.00	0.00	0.00	0.00
112.5	0.00	0.00	0.00	0.00	0.00	0.00	0.00	0.00	0.00	0.00
115.0	0.00	0.00	0.00	0.00	0.00	0.00	0.00	0.00	0.00	0.00
117.5	0.00	0.00	0.00	0.00	0.00	0.00	0.00	0.00	0.00	0.00
120.0	0.00	0.00	0.00	0.00	0.00	0.00	0.00	0.00	0.00	0.00
122.5	0.00	0.00	0.00	0.00	0.00	0.00	0.00	0.00	0.00	0.00
125.0	0.00	0.00	0.00	0.00	0.00	0.00	0.00	0.00	0.00	0.00
127.5	0.00	0.00	0.00	0.00	0.00	0.00	0.00	0.00	0.00	0.00
130.0	0.00	0.00	0.00	0.00	0.00	0.00	0.00	0.00	0.00	0.00
132.5	0.00	0.00	0.00	0.00	0.00	0.00	0.00	0.00	0.00	0.00
135.0	0.00	0.00	0.00	0.00	0.00	0.00	0.00	0.00	0.00	0.00
137.5	0.00	0.00	0.00	0.00	0.00	0.00	0.00	0.00	0.00	0.00
140.0	0.00	0.00	0.00	0.00	0.00	0.00	0.00	0.00	0.00	0.00
142.5	0.00	0.00	0.00	0.00	0.00	0.00	0.00	0.00	0.00	0.00
145.0	0.00	0.00	0.00	0.00	0.00	0.00	0.00	0.00	0.00	0.00
147.5	0.00	0.00	0.00	0.00	0.00	0.00	0.00	0.00	0.00	0.00
150.0	0.00	0.00	0.00	0.00	0.00	0.00	0.00	0.00	0.00	0.00
152.5	0.00	0.00	0.00	0.00	0.00	0.00	0.00	0.00	0.00	0.00
155.0	0.00	0.00	0.00	0.00	0.00	0.00	0.00	0.00	0.00	0.00
157.5	0.00	0.00	0.00	0.00	0.00	0.00	0.00	0.00	0.00	0.00
160.0	0.00	0.00	0.00	0.00	0.00	0.00	0.00	0.00	0.00	0.00
162.5	0.00	0.00	0.00	0.00	0.00	0.00	0.00	0.00	0.00	0.00
165.0	0.00	0.00	0.00	0.00	0.00	0.00	0.00	0.00	0.00	0.00
167.5	0.00	0.00	0.00	0.00	0.00	0.00	0.00	0.00	0.00	0.00

IES INDOOR REPORT
PHOTOMETRIC FILENAME : SPL-ST-1203-35WH.IES

CANDELA TABULATION - (Cont.)

170.0	0.00	0.00	0.00	0.00	0.00	0.00	0.00	0.00	0.00	0.00
172.5	0.00	0.00	0.00	0.00	0.00	0.00	0.00	0.00	0.00	0.00
175.0	0.00	0.00	0.00	0.00	0.00	0.00	0.00	0.00	0.00	0.00
177.5	0.00	0.00	0.00	0.00	0.00	0.00	0.00	0.00	0.00	0.00
180.0	0.00	0.00	0.00	0.00	0.00	0.00	0.00	0.00	0.00	0.00

Vert. Angles **Horizontal Angles**

	<u>150</u>	<u>155</u>	<u>160</u>	<u>165</u>	<u>170</u>	<u>175</u>	<u>180</u>
0.0	0.00	0.00	0.00	0.00	0.00	0.00	0.00
2.5	0.00	0.00	0.00	0.00	0.00	0.00	0.00
5.0	0.00	0.00	0.00	0.00	0.00	0.00	0.00
7.5	0.00	0.00	0.00	0.00	0.00	0.00	0.00
10.0	0.00	0.00	0.00	0.00	0.00	0.00	0.00
12.5	0.00	0.00	0.00	0.00	0.00	0.00	0.00
15.0	0.00	0.00	0.00	0.00	0.00	0.00	0.00
17.5	0.00	0.00	0.00	0.00	0.00	0.00	0.00
20.0	0.00	0.00	0.00	0.00	0.00	0.00	0.00
22.5	0.00	0.00	0.00	0.00	0.00	0.00	0.00
25.0	0.00	0.00	0.00	0.00	0.00	0.00	0.00
27.5	0.00	0.00	0.00	0.00	0.00	0.00	0.00
30.0	0.00	0.00	0.00	0.00	0.00	0.00	0.00
32.5	0.00	0.00	0.00	0.00	0.00	0.00	0.00
35.0	0.00	0.00	0.00	0.00	0.00	0.00	0.00
37.5	0.00	0.00	0.00	0.00	0.00	0.00	0.00
40.0	0.00	0.00	0.00	0.00	0.00	0.00	0.00
42.5	0.00	0.00	0.00	0.00	0.00	0.00	0.00
45.0	0.00	0.00	0.00	0.00	0.00	0.00	0.00
47.5	0.00	0.00	0.00	0.00	0.00	0.00	0.00
50.0	0.00	0.00	0.00	0.00	0.00	0.00	0.00
52.5	0.00	0.00	0.00	0.00	0.00	0.00	0.00
55.0	0.00	0.00	0.00	0.00	0.00	0.00	0.00
57.5	0.00	0.00	0.00	0.00	0.00	0.00	0.00
60.0	0.00	0.00	0.00	0.00	0.00	0.00	0.00
62.5	0.00	0.00	0.00	0.00	0.00	0.00	0.00
65.0	0.00	0.00	0.00	0.00	0.00	0.00	0.00
67.5	0.00	0.00	0.00	0.00	0.00	0.00	0.00
70.0	0.00	0.00	0.00	0.00	0.00	0.00	0.00
72.5	0.00	0.00	0.00	0.00	0.00	0.00	0.00
75.0	0.00	0.00	0.00	0.00	0.00	0.00	0.00
77.5	0.00	0.00	0.00	0.00	0.00	0.00	0.00
80.0	0.00	0.00	0.00	0.00	0.00	0.00	0.00
82.5	0.00	0.00	0.00	0.00	0.00	0.00	0.00
85.0	0.00	0.00	0.00	0.00	0.00	0.00	0.00
87.5	0.00	0.00	0.00	0.00	0.00	0.00	0.00
90.0	0.00	0.00	0.00	0.00	0.00	0.00	0.00
92.5	0.00	0.00	0.00	0.00	0.00	0.00	0.00
95.0	0.00	0.00	0.00	0.00	0.00	0.00	0.00
97.5	0.00	0.00	0.00	0.00	0.00	0.00	0.00
100.0	0.00	0.00	0.00	0.00	0.00	0.00	0.00
102.5	0.00	0.00	0.00	0.00	0.00	0.00	0.00
105.0	0.00	0.00	0.00	0.00	0.00	0.00	0.00
107.5	0.00	0.00	0.00	0.00	0.00	0.00	0.00
110.0	0.00	0.00	0.00	0.00	0.00	0.00	0.00
112.5	0.00	0.00	0.00	0.00	0.00	0.00	0.00
115.0	0.00	0.00	0.00	0.00	0.00	0.00	0.00

IES INDOOR REPORT
PHOTOMETRIC FILENAME : SPL-ST-1203-35WH.IES

CANDELA TABULATION - (Cont.)

117.5	0.00	0.00	0.00	0.00	0.00	0.00	0.00
120.0	0.00	0.00	0.00	0.00	0.00	0.00	0.00
122.5	0.00	0.00	0.00	0.00	0.00	0.00	0.00
125.0	0.00	0.00	0.00	0.00	0.00	0.00	0.00
127.5	0.00	0.00	0.00	0.00	0.00	0.00	0.00
130.0	0.00	0.00	0.00	0.00	0.00	0.00	0.00
132.5	0.00	0.00	0.00	0.00	0.00	0.00	0.00
135.0	0.00	0.00	0.00	0.00	0.00	0.00	0.00
137.5	0.00	0.00	0.00	0.00	0.00	0.00	0.00
140.0	0.00	0.00	0.00	0.00	0.00	0.00	0.00
142.5	0.00	0.00	0.00	0.00	0.00	0.00	0.00
145.0	0.00	0.00	0.00	0.00	0.00	0.00	0.00
147.5	0.00	0.00	0.00	0.00	0.00	0.00	0.00
150.0	0.00	0.00	0.00	0.00	0.00	0.00	0.00
152.5	0.00	0.00	0.00	0.00	0.00	0.00	0.00
155.0	0.00	0.00	0.00	0.00	0.00	0.00	0.00
157.5	0.00	0.00	0.00	0.00	0.00	0.00	0.00
160.0	0.00	0.00	0.00	0.00	0.00	0.00	0.00
162.5	0.00	0.00	0.00	0.00	0.00	0.00	0.00
165.0	0.00	0.00	0.00	0.00	0.00	0.00	0.00
167.5	0.00	0.00	0.00	0.00	0.00	0.00	0.00
170.0	0.00	0.00	0.00	0.00	0.00	0.00	0.00
172.5	0.00	0.00	0.00	0.00	0.00	0.00	0.00
175.0	0.00	0.00	0.00	0.00	0.00	0.00	0.00
177.5	0.00	0.00	0.00	0.00	0.00	0.00	0.00
180.0	0.00	0.00	0.00	0.00	0.00	0.00	0.00

IES INDOOR REPORT
PHOTOMETRIC FILENAME : SPL-ST-1203-35WH.IES

ZONAL LUMEN SUMMARY

Zone	Lumens	%Lamp	%Fixt
0-20	0.48	N.A.	0.60
0-30	3.39	N.A.	4.10
0-40	9.46	N.A.	11.40
0-60	26.33	N.A.	31.70
0-80	43.95	N.A.	52.90
0-90	51.83	N.A.	62.40
10-90	51.80	N.A.	62.40
20-40	8.98	N.A.	10.80
20-50	16.98	N.A.	20.50
40-70	25.94	N.A.	31.30
60-80	17.62	N.A.	21.20
70-80	8.55	N.A.	10.30
80-90	7.88	N.A.	9.50
90-110	14.88	N.A.	17.90
90-120	20.83	N.A.	25.10
90-130	25.28	N.A.	30.50
90-150	30.01	N.A.	36.20
90-180	31.18	N.A.	37.60
110-180	16.29	N.A.	19.60
0-180	83.01	N.A.	100.00

Total Luminaire Efficiency = N.A.%

ZONAL LUMEN SUMMARY

Zone	Lumens
0-10	0.02
10-20	0.45
20-30	2.91
30-40	6.07
40-50	7.99
50-60	8.88
60-70	9.07
70-80	8.55
80-90	7.88
90-100	7.73
100-110	7.15
110-120	5.94
120-130	4.46
130-140	2.98
140-150	1.75
150-160	0.84
160-170	0.29
170-180	0.04

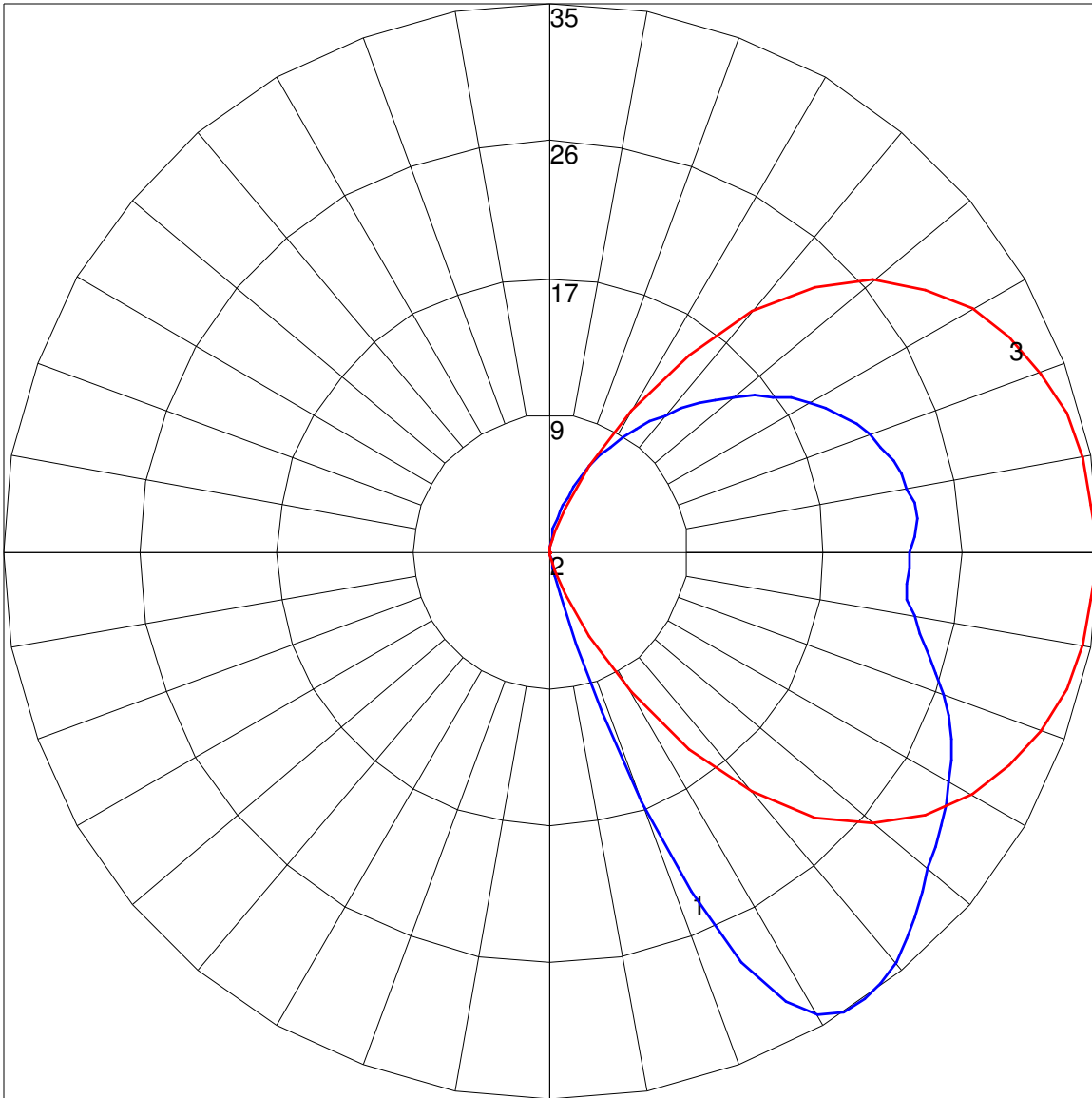
IES INDOOR REPORT
PHOTOMETRIC FILENAME : SPL-ST-1203-35WH.IES

COEFFICIENTS OF UTILIZATION - ZONAL CAVITY METHOD

Effective Floor Cavity Reflectance 0.20

RC	80				70				50			30			10			0
RW	70	50	30	10	70	50	30	10	50	30	10	50	30	10	50	30	10	0
0	110	110	110	110	103	103	103	103	90	90	90	78	78	78	68	68	68	62
1	96	89	83	78	89	83	78	73	72	68	64	61	58	55	52	49	47	42
2	85	75	66	59	78	69	62	56	60	54	49	51	46	42	42	39	35	31
3	76	64	54	46	70	59	51	44	51	44	38	43	37	33	36	31	28	24
4	68	55	45	37	63	51	42	35	44	36	31	37	31	26	30	26	22	18
5	62	48	38	31	57	45	36	29	38	31	25	32	26	21	27	22	18	15
6	57	42	33	26	52	39	31	24	34	26	21	28	22	18	23	19	15	12
7	52	38	28	22	48	35	26	20	30	23	18	25	19	15	21	16	12	10
8	48	34	25	19	44	31	23	17	27	20	15	23	17	13	19	14	11	8
9	44	30	22	16	41	28	20	15	24	18	13	21	15	11	17	12	9	7
10	41	28	19	14	38	26	18	13	22	16	11	19	13	10	16	11	8	6

POLAR GRAPH



Maximum Candela = 34.61 Located At Horizontal Angle = 0, Vertical Angle = 35

1 - Vertical Plane Through Horizontal Angles (0 - 180) (Through Max. Cd.)

2 - Vertical Plane Through Horizontal Angles (90 - 270)

3 - Horizontal Cone Through Vertical Angle (35) (Through Max. Cd.)