

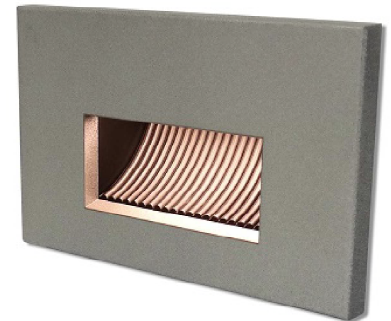
IES INDOOR REPORT
PHOTOMETRIC FILENAME : SPL-ST-121-35WH.IES

DESCRIPTION INFORMATION (From Photometric File)

IESNA:LM-63-2002
 [TEST] 3132
 [ECN] 3165
 [TESTLAB] Tempo LLC
 [ISSUE DATE] 6/2/2017 10:01:04 AM
 [MANUFAC] Tempo LLC
 [LUMCAT] SPL-ST-121-35WH
 [LUMINAIRE] White aluminum housing and coverplate with frosted lens
 [LAMP] Four (4) white LEDs (3500K)
 [ELECTRICALS] 11.99 VDC, 0.09 A, 1.00 PF

CHARACTERISTICS

Lumens Per Lamp	N.A. (absolute)
Total Lamp Lumens	N.A. (absolute)
Luminaire Lumens	31
Total Luminaire Efficiency	N.A.
Luminaire Efficacy Rating (LER)	31
Total Luminaire Watts	1.02
Ballast Factor	1.00
CIE Type	Semi-Direct
Spacing Criterion (0-180)	0.02
Spacing Criterion (90-270)	N.A.
Spacing Criterion (Diagonal)	70.32
Basic Luminous Shape	Vertical Rectangle
Luminous Length (0-180)	0.00 ft
Luminous Width (90-270)	0.21 ft
Luminous Height	0.09 ft



LUMINANCE DATA (cd/sq.m)

Angle In Degrees	Average 0-Deg	Average 45-Deg	Average 90-Deg
45	0	10298	0
55	0	8262	0
65	0	6797	0
75	0	5724	0
85	0	4925	0

IES INDOOR REPORT
PHOTOMETRIC FILENAME : SPL-ST-121-35WH.IES

CANDELA TABULATION

	<u>0</u>	<u>5</u>	<u>10</u>	<u>15</u>	<u>20</u>	<u>25</u>	<u>30</u>	<u>35</u>	<u>40</u>	<u>45</u>
0.0	0.00	0.00	0.00	0.00	0.00	0.00	0.00	0.00	0.00	0.00
2.5	0.00	0.00	0.00	0.00	0.01	0.01	0.01	0.01	0.01	0.01
5.0	0.22	0.22	0.22	0.21	0.20	0.18	0.17	0.15	0.13	0.11
7.5	0.40	0.37	0.34	0.31	0.28	0.26	0.24	0.23	0.22	0.22
10.0	0.59	0.59	0.57	0.55	0.51	0.45	0.38	0.28	0.17	0.14
12.5	0.98	0.99	0.97	0.93	0.88	0.82	0.73	0.63	0.50	0.33
15.0	2.11	2.12	2.02	1.90	1.73	1.51	1.23	0.99	0.85	0.70
17.5	3.65	3.67	3.51	3.31	3.03	2.67	2.22	1.84	1.43	1.04
20.0	5.72	5.74	5.50	5.19	4.75	4.20	3.58	2.99	2.33	1.78
22.5	7.95	7.96	7.66	7.28	6.75	6.08	5.30	4.43	3.54	2.70
25.0	9.90	9.82	9.59	9.20	8.69	8.01	7.08	6.05	4.96	3.81
27.5	11.25	11.17	10.97	10.67	10.26	9.59	8.68	7.66	6.43	5.13
30.0	11.99	11.91	11.77	11.57	11.23	10.65	9.90	8.96	7.82	6.41
32.5	12.31	12.25	12.15	12.02	11.71	11.24	10.69	9.88	8.84	7.58
35.0	12.40	12.34	12.27	12.18	11.90	11.52	11.08	10.41	9.52	8.41
37.5	12.36	12.31	12.26	12.15	11.90	11.60	11.19	10.65	9.90	8.98
40.0	12.25	12.20	12.17	12.03	11.82	11.57	11.15	10.64	10.02	9.26
42.5	12.08	12.04	12.02	11.87	11.68	11.43	11.03	10.57	10.02	9.35
45.0	11.90	11.86	11.85	11.68	11.52	11.24	10.89	10.45	9.94	9.35
47.5	11.62	11.59	11.59	11.46	11.31	11.03	10.70	10.29	9.79	9.23
50.0	11.40	11.38	11.35	11.21	11.05	10.79	10.49	10.08	9.61	9.08
52.5	11.24	11.22	11.17	11.04	10.83	10.57	10.25	9.86	9.42	8.90
55.0	11.13	11.11	11.04	10.92	10.68	10.40	10.04	9.64	9.19	8.69
57.5	11.00	10.98	10.90	10.77	10.54	10.25	9.88	9.45	8.99	8.47
60.0	10.85	10.83	10.76	10.61	10.40	10.10	9.73	9.29	8.79	8.25
62.5	10.68	10.67	10.60	10.44	10.22	9.94	9.57	9.13	8.63	8.08
65.0	10.48	10.47	10.41	10.26	10.03	9.75	9.39	8.96	8.46	7.91
67.5	10.26	10.24	10.17	10.03	9.82	9.53	9.20	8.77	8.29	7.73
70.0	9.99	9.97	9.90	9.77	9.56	9.30	8.96	8.56	8.08	7.54
72.5	9.69	9.67	9.60	9.49	9.29	9.03	8.70	8.32	7.85	7.34
75.0	9.40	9.39	9.33	9.19	9.01	8.74	8.43	8.06	7.61	7.10
77.5	9.14	9.12	9.06	8.92	8.73	8.47	8.17	7.79	7.36	6.87
80.0	8.88	8.89	8.82	8.68	8.49	8.23	7.91	7.56	7.13	6.64
82.5	8.70	8.70	8.62	8.48	8.28	8.03	7.72	7.34	6.90	6.40
85.0	8.59	8.58	8.50	8.35	8.16	7.88	7.53	7.18	6.77	6.30
87.5	8.61	8.58	8.48	8.32	8.11	7.84	7.53	7.14	6.71	6.20
90.0	8.68	8.65	8.55	8.38	8.14	7.85	7.50	7.09	6.62	6.10
92.5	8.76	8.73	8.63	8.46	8.22	7.91	7.56	7.14	6.67	6.13
95.0	8.80	8.77	8.66	8.48	8.25	7.95	7.60	7.17	6.69	6.14
97.5	8.79	8.75	8.65	8.47	8.24	7.93	7.57	7.15	6.68	6.13
100.0	8.73	8.70	8.59	8.42	8.18	7.88	7.52	7.10	6.60	6.05
102.5	8.64	8.61	8.50	8.33	8.08	7.79	7.43	7.02	6.52	5.95
105.0	8.51	8.48	8.38	8.21	7.96	7.67	7.31	6.88	6.39	5.83
107.5	8.36	8.33	8.23	8.05	7.81	7.51	7.15	6.72	6.22	5.68
110.0	8.17	8.15	8.05	7.86	7.63	7.33	6.96	6.54	6.04	5.47
112.5	7.97	7.93	7.83	7.65	7.42	7.12	6.75	6.33	5.84	5.27
115.0	7.72	7.69	7.59	7.42	7.18	6.88	6.52	6.10	5.61	5.06
117.5	7.46	7.43	7.33	7.16	6.92	6.62	6.27	5.85	5.37	4.84
120.0	7.17	7.14	7.04	6.87	6.64	6.35	6.00	5.59	5.13	4.61
122.5	6.86	6.84	6.73	6.57	6.35	6.07	5.72	5.32	4.88	4.38
125.0	6.53	6.51	6.41	6.25	6.04	5.76	5.43	5.05	4.62	4.16
127.5	6.20	6.17	6.08	5.93	5.72	5.45	5.14	4.77	4.36	3.92
130.0	5.85	5.83	5.74	5.59	5.39	5.14	4.83	4.49	4.11	3.68
132.5	5.50	5.48	5.39	5.26	5.06	4.82	4.54	4.21	3.85	3.45

IES INDOOR REPORT
PHOTOMETRIC FILENAME : SPL-ST-121-35WH.IES

CANDELA TABULATION - (Cont.)

135.0	5.15	5.13	5.04	4.91	4.73	4.51	4.23	3.93	3.59	3.22
137.5	4.78	4.77	4.69	4.57	4.40	4.18	3.94	3.65	3.33	2.99
140.0	4.42	4.41	4.34	4.22	4.07	3.87	3.64	3.38	3.08	2.78
142.5	4.06	4.05	3.98	3.88	3.74	3.56	3.34	3.11	2.84	2.56
145.0	3.71	3.70	3.64	3.55	3.42	3.26	3.06	2.84	2.61	2.35
147.5	3.36	3.36	3.31	3.22	3.10	2.96	2.78	2.59	2.38	2.15
150.0	3.03	3.03	2.98	2.90	2.80	2.67	2.52	2.35	2.15	1.95
152.5	2.71	2.70	2.67	2.60	2.51	2.40	2.26	2.11	1.94	1.76
155.0	2.41	2.40	2.37	2.31	2.23	2.13	2.01	1.88	1.73	1.57
157.5	2.11	2.11	2.07	2.02	1.96	1.87	1.77	1.66	1.53	1.39
160.0	1.83	1.83	1.80	1.75	1.70	1.62	1.53	1.44	1.33	1.25
162.5	1.55	1.55	1.52	1.49	1.44	1.38	1.31	1.26	1.21	1.15
165.0	1.29	1.29	1.28	1.27	1.25	1.23	1.20	1.15	1.09	1.03
167.5	1.18	1.18	1.16	1.14	1.12	1.09	1.05	1.01	0.94	0.87
170.0	0.99	0.99	0.97	0.95	0.93	0.89	0.85	0.80	0.75	0.69
172.5	0.73	0.73	0.72	0.71	0.69	0.66	0.63	0.60	0.56	0.52
175.0	0.49	0.49	0.49	0.47	0.46	0.44	0.42	0.39	0.36	0.32
177.5	0.24	0.24	0.24	0.24	0.23	0.21	0.20	0.19	0.18	0.17
180.0	0.00	0.00	0.00	0.00	0.00	0.00	0.00	0.00	0.00	0.00

Vert. Angles **Horizontal Angles**

	<u>50</u>	<u>55</u>	<u>60</u>	<u>65</u>	<u>70</u>	<u>75</u>	<u>80</u>	<u>85</u>	<u>90</u>	<u>95</u>
0.0	0.00	0.00	0.00	0.00	0.00	0.00	0.00	0.00	0.00	0.00
2.5	0.01	0.01	0.01	0.01	0.01	0.01	0.01	0.00	0.00	0.00
5.0	0.08	0.06	0.03	0.03	0.02	0.02	0.02	0.01	0.00	0.00
7.5	0.21	0.17	0.14	0.10	0.05	0.04	0.03	0.02	0.00	0.00
10.0	0.15	0.18	0.23	0.18	0.13	0.07	0.05	0.03	0.00	0.00
12.5	0.13	0.03	0.12	0.21	0.18	0.11	0.06	0.03	0.00	0.00
15.0	0.49	0.25	0.01	0.11	0.23	0.15	0.06	0.03	0.00	0.00
17.5	0.83	0.60	0.28	0.03	0.15	0.20	0.08	0.03	0.00	0.00
20.0	1.23	0.89	0.57	0.20	0.08	0.23	0.11	0.03	0.00	0.00
22.5	1.93	1.27	0.86	0.45	0.07	0.20	0.15	0.04	0.00	0.00
25.0	2.79	1.90	1.18	0.70	0.31	0.22	0.19	0.05	0.00	0.00
27.5	3.82	2.63	1.70	0.99	0.50	0.28	0.22	0.06	0.00	0.00
30.0	4.97	3.54	2.27	1.31	0.63	0.39	0.25	0.08	0.00	0.00
32.5	6.07	4.48	2.96	1.74	0.87	0.48	0.26	0.08	0.00	0.00
35.0	7.03	5.42	3.73	2.25	1.16	0.56	0.27	0.08	0.00	0.00
37.5	7.78	6.25	4.50	2.82	1.46	0.66	0.29	0.08	0.00	0.00
40.0	8.26	6.91	5.23	3.40	1.80	0.77	0.32	0.07	0.00	0.00
42.5	8.52	7.40	5.88	4.01	2.22	0.93	0.36	0.07	0.00	0.00
45.0	8.61	7.66	6.31	4.51	2.63	1.17	0.41	0.07	0.00	0.00
47.5	8.59	7.77	6.54	4.90	3.02	1.43	0.47	0.06	0.00	0.00
50.0	8.47	7.71	6.68	5.19	3.39	1.68	0.55	0.05	0.00	0.00
52.5	8.32	7.61	6.66	5.40	3.69	1.89	0.66	0.06	0.00	0.00
55.0	8.13	7.46	6.59	5.43	3.85	2.08	0.77	0.07	0.00	0.00
57.5	7.92	7.28	6.48	5.38	3.96	2.26	0.88	0.09	0.00	0.00
60.0	7.71	7.08	6.29	5.28	4.02	2.42	0.98	0.12	0.00	0.00
62.5	7.51	6.86	6.09	5.15	4.00	2.48	1.04	0.11	0.00	0.00
65.0	7.31	6.63	5.89	5.00	3.90	2.48	1.08	0.08	0.00	0.00
67.5	7.12	6.45	5.70	4.82	3.78	2.46	1.11	0.05	0.00	0.00
70.0	6.93	6.26	5.50	4.64	3.64	2.42	1.14	0.02	0.00	0.00
72.5	6.74	6.07	5.29	4.45	3.51	2.37	1.15	0.10	0.00	0.00
75.0	6.53	5.88	5.12	4.29	3.38	2.30	1.14	0.19	0.00	0.00
77.5	6.31	5.67	4.94	4.12	3.24	2.23	1.14	0.29	0.00	0.00
80.0	6.08	5.45	4.74	3.93	3.08	2.13	1.12	0.41	0.00	0.00

IES INDOOR REPORT
PHOTOMETRIC FILENAME : SPL-ST-121-35WH.IES

CANDELA TABULATION - (Cont.)

82.5	5.85	5.26	4.57	3.79	2.97	2.06	1.12	0.42	0.00	0.00
85.0	5.75	5.14	4.44	3.66	2.87	2.00	1.10	0.42	0.00	0.00
87.5	5.64	5.01	4.31	3.53	2.73	1.91	1.07	0.43	0.00	0.00
90.0	5.52	4.87	4.15	3.38	2.60	1.83	1.05	0.44	0.00	0.00
92.5	5.53	4.87	4.13	3.33	2.55	1.78	1.03	0.44	0.00	0.00
95.0	5.53	4.84	4.08	3.27	2.50	1.74	1.01	0.44	0.00	0.00
97.5	5.51	4.81	4.03	3.21	2.42	1.68	0.99	0.44	0.00	0.00
100.0	5.42	4.72	3.95	3.13	2.35	1.62	0.95	0.44	0.00	0.00
102.5	5.31	4.60	3.84	3.05	2.28	1.58	0.94	0.43	0.00	0.00
105.0	5.19	4.48	3.72	2.96	2.21	1.52	0.91	0.42	0.00	0.00
107.5	5.03	4.33	3.60	2.85	2.13	1.48	0.89	0.41	0.00	0.00
110.0	4.85	4.18	3.47	2.75	2.06	1.42	0.87	0.40	0.00	0.00
112.5	4.66	4.01	3.32	2.64	1.99	1.38	0.85	0.35	0.00	0.00
115.0	4.47	3.83	3.18	2.53	1.91	1.33	0.83	0.29	0.00	0.00
117.5	4.27	3.66	3.03	2.42	1.83	1.28	0.80	0.24	0.00	0.00
120.0	4.07	3.49	2.89	2.31	1.75	1.23	0.78	0.20	0.00	0.00
122.5	3.85	3.31	2.76	2.20	1.67	1.18	0.77	0.24	0.00	0.00
125.0	3.65	3.13	2.60	2.09	1.60	1.14	0.75	0.29	0.00	0.00
127.5	3.44	2.95	2.46	1.98	1.51	1.09	0.73	0.33	0.00	0.00
130.0	3.23	2.78	2.32	1.88	1.44	1.04	0.72	0.35	0.00	0.00
132.5	3.03	2.61	2.18	1.77	1.36	1.00	0.69	0.27	0.00	0.00
135.0	2.83	2.44	2.05	1.66	1.29	0.96	0.63	0.20	0.00	0.00
137.5	2.64	2.27	1.91	1.56	1.21	0.92	0.53	0.14	0.00	0.00
140.0	2.45	2.12	1.79	1.46	1.14	0.90	0.42	0.09	0.00	0.00
142.5	2.26	1.96	1.66	1.36	1.08	0.86	0.35	0.09	0.00	0.00
145.0	2.08	1.81	1.53	1.26	1.04	0.83	0.30	0.07	0.00	0.00
147.5	1.91	1.66	1.41	1.17	1.01	0.78	0.27	0.04	0.00	0.00
150.0	1.74	1.52	1.29	1.10	0.97	0.73	0.24	0.00	0.00	0.00
152.5	1.57	1.37	1.20	1.06	0.90	0.61	0.21	0.03	0.00	0.00
155.0	1.40	1.25	1.11	1.01	0.81	0.49	0.18	0.06	0.00	0.00
157.5	1.26	1.15	1.06	0.92	0.73	0.38	0.17	0.08	0.00	0.00
160.0	1.16	1.08	0.98	0.82	0.59	0.27	0.17	0.09	0.00	0.00
162.5	1.07	0.99	0.85	0.70	0.47	0.28	0.16	0.08	0.00	0.00
165.0	0.95	0.84	0.73	0.57	0.40	0.26	0.13	0.07	0.00	0.00
167.5	0.78	0.69	0.60	0.48	0.35	0.22	0.11	0.06	0.00	0.00
170.0	0.63	0.56	0.49	0.38	0.26	0.14	0.09	0.06	0.00	0.00
172.5	0.47	0.40	0.33	0.25	0.17	0.13	0.09	0.06	0.00	0.00
175.0	0.29	0.24	0.20	0.17	0.14	0.10	0.08	0.05	0.00	0.00
177.5	0.15	0.14	0.12	0.10	0.09	0.07	0.05	0.04	0.00	0.00
180.0	0.00	0.00	0.00	0.00	0.00	0.00	0.00	0.00	0.00	0.00

Vert. Horizontal Angles

	<u>100</u>	<u>105</u>	<u>110</u>	<u>115</u>	<u>120</u>	<u>125</u>	<u>130</u>	<u>135</u>	<u>140</u>	<u>145</u>
0.0	0.00	0.00	0.00	0.00	0.00	0.00	0.00	0.00	0.00	0.00
2.5	0.00	0.00	0.00	0.00	0.00	0.00	0.00	0.00	0.00	0.00
5.0	0.00	0.00	0.00	0.00	0.00	0.00	0.00	0.00	0.00	0.00
7.5	0.00	0.00	0.00	0.00	0.00	0.00	0.00	0.00	0.00	0.00
10.0	0.00	0.00	0.00	0.00	0.00	0.00	0.00	0.00	0.00	0.00
12.5	0.00	0.00	0.00	0.00	0.00	0.00	0.00	0.00	0.00	0.00
15.0	0.00	0.00	0.00	0.00	0.00	0.00	0.00	0.00	0.00	0.00
17.5	0.00	0.00	0.00	0.00	0.00	0.00	0.00	0.00	0.00	0.00
20.0	0.00	0.00	0.00	0.00	0.00	0.00	0.00	0.00	0.00	0.00
22.5	0.00	0.00	0.00	0.00	0.00	0.00	0.00	0.00	0.00	0.00
25.0	0.00	0.00	0.00	0.00	0.00	0.00	0.00	0.00	0.00	0.00
27.5	0.00	0.00	0.00	0.00	0.00	0.00	0.00	0.00	0.00	0.00

IES INDOOR REPORT
PHOTOMETRIC FILENAME : SPL-ST-121-35WH.IES

CANDELA TABULATION - (Cont.)

30.0	0.00	0.00	0.00	0.00	0.00	0.00	0.00	0.00	0.00	0.00
32.5	0.00	0.00	0.00	0.00	0.00	0.00	0.00	0.00	0.00	0.00
35.0	0.00	0.00	0.00	0.00	0.00	0.00	0.00	0.00	0.00	0.00
37.5	0.00	0.00	0.00	0.00	0.00	0.00	0.00	0.00	0.00	0.00
40.0	0.00	0.00	0.00	0.00	0.00	0.00	0.00	0.00	0.00	0.00
42.5	0.00	0.00	0.00	0.00	0.00	0.00	0.00	0.00	0.00	0.00
45.0	0.00	0.00	0.00	0.00	0.00	0.00	0.00	0.00	0.00	0.00
47.5	0.00	0.00	0.00	0.00	0.00	0.00	0.00	0.00	0.00	0.00
50.0	0.00	0.00	0.00	0.00	0.00	0.00	0.00	0.00	0.00	0.00
52.5	0.00	0.00	0.00	0.00	0.00	0.00	0.00	0.00	0.00	0.00
55.0	0.00	0.00	0.00	0.00	0.00	0.00	0.00	0.00	0.00	0.00
57.5	0.00	0.00	0.00	0.00	0.00	0.00	0.00	0.00	0.00	0.00
60.0	0.00	0.00	0.00	0.00	0.00	0.00	0.00	0.00	0.00	0.00
62.5	0.00	0.00	0.00	0.00	0.00	0.00	0.00	0.00	0.00	0.00
65.0	0.00	0.00	0.00	0.00	0.00	0.00	0.00	0.00	0.00	0.00
67.5	0.00	0.00	0.00	0.00	0.00	0.00	0.00	0.00	0.00	0.00
70.0	0.00	0.00	0.00	0.00	0.00	0.00	0.00	0.00	0.00	0.00
72.5	0.00	0.00	0.00	0.00	0.00	0.00	0.00	0.00	0.00	0.00
75.0	0.00	0.00	0.00	0.00	0.00	0.00	0.00	0.00	0.00	0.00
77.5	0.00	0.00	0.00	0.00	0.00	0.00	0.00	0.00	0.00	0.00
80.0	0.00	0.00	0.00	0.00	0.00	0.00	0.00	0.00	0.00	0.00
82.5	0.00	0.00	0.00	0.00	0.00	0.00	0.00	0.00	0.00	0.00
85.0	0.00	0.00	0.00	0.00	0.00	0.00	0.00	0.00	0.00	0.00
87.5	0.00	0.00	0.00	0.00	0.00	0.00	0.00	0.00	0.00	0.00
90.0	0.00	0.00	0.00	0.00	0.00	0.00	0.00	0.00	0.00	0.00
92.5	0.00	0.00	0.00	0.00	0.00	0.00	0.00	0.00	0.00	0.00
95.0	0.00	0.00	0.00	0.00	0.00	0.00	0.00	0.00	0.00	0.00
97.5	0.00	0.00	0.00	0.00	0.00	0.00	0.00	0.00	0.00	0.00
100.0	0.00	0.00	0.00	0.00	0.00	0.00	0.00	0.00	0.00	0.00
102.5	0.00	0.00	0.00	0.00	0.00	0.00	0.00	0.00	0.00	0.00
105.0	0.00	0.00	0.00	0.00	0.00	0.00	0.00	0.00	0.00	0.00
107.5	0.00	0.00	0.00	0.00	0.00	0.00	0.00	0.00	0.00	0.00
110.0	0.00	0.00	0.00	0.00	0.00	0.00	0.00	0.00	0.00	0.00
112.5	0.00	0.00	0.00	0.00	0.00	0.00	0.00	0.00	0.00	0.00
115.0	0.00	0.00	0.00	0.00	0.00	0.00	0.00	0.00	0.00	0.00
117.5	0.00	0.00	0.00	0.00	0.00	0.00	0.00	0.00	0.00	0.00
120.0	0.00	0.00	0.00	0.00	0.00	0.00	0.00	0.00	0.00	0.00
122.5	0.00	0.00	0.00	0.00	0.00	0.00	0.00	0.00	0.00	0.00
125.0	0.00	0.00	0.00	0.00	0.00	0.00	0.00	0.00	0.00	0.00
127.5	0.00	0.00	0.00	0.00	0.00	0.00	0.00	0.00	0.00	0.00
130.0	0.00	0.00	0.00	0.00	0.00	0.00	0.00	0.00	0.00	0.00
132.5	0.00	0.00	0.00	0.00	0.00	0.00	0.00	0.00	0.00	0.00
135.0	0.00	0.00	0.00	0.00	0.00	0.00	0.00	0.00	0.00	0.00
137.5	0.00	0.00	0.00	0.00	0.00	0.00	0.00	0.00	0.00	0.00
140.0	0.00	0.00	0.00	0.00	0.00	0.00	0.00	0.00	0.00	0.00
142.5	0.00	0.00	0.00	0.00	0.00	0.00	0.00	0.00	0.00	0.00
145.0	0.00	0.00	0.00	0.00	0.00	0.00	0.00	0.00	0.00	0.00
147.5	0.00	0.00	0.00	0.00	0.00	0.00	0.00	0.00	0.00	0.00
150.0	0.00	0.00	0.00	0.00	0.00	0.00	0.00	0.00	0.00	0.00
152.5	0.00	0.00	0.00	0.00	0.00	0.00	0.00	0.00	0.00	0.00
155.0	0.00	0.00	0.00	0.00	0.00	0.00	0.00	0.00	0.00	0.00
157.5	0.00	0.00	0.00	0.00	0.00	0.00	0.00	0.00	0.00	0.00
160.0	0.00	0.00	0.00	0.00	0.00	0.00	0.00	0.00	0.00	0.00
162.5	0.00	0.00	0.00	0.00	0.00	0.00	0.00	0.00	0.00	0.00
165.0	0.00	0.00	0.00	0.00	0.00	0.00	0.00	0.00	0.00	0.00
167.5	0.00	0.00	0.00	0.00	0.00	0.00	0.00	0.00	0.00	0.00

IES INDOOR REPORT
PHOTOMETRIC FILENAME : SPL-ST-121-35WH.IES

CANDELA TABULATION - (Cont.)

170.0	0.00	0.00	0.00	0.00	0.00	0.00	0.00	0.00	0.00	0.00
172.5	0.00	0.00	0.00	0.00	0.00	0.00	0.00	0.00	0.00	0.00
175.0	0.00	0.00	0.00	0.00	0.00	0.00	0.00	0.00	0.00	0.00
177.5	0.00	0.00	0.00	0.00	0.00	0.00	0.00	0.00	0.00	0.00
180.0	0.00	0.00	0.00	0.00	0.00	0.00	0.00	0.00	0.00	0.00

Vert. Angles **Horizontal Angles**

	<u>150</u>	<u>155</u>	<u>160</u>	<u>165</u>	<u>170</u>	<u>175</u>	<u>180</u>
0.0	0.00	0.00	0.00	0.00	0.00	0.00	0.00
2.5	0.00	0.00	0.00	0.00	0.00	0.00	0.00
5.0	0.00	0.00	0.00	0.00	0.00	0.00	0.00
7.5	0.00	0.00	0.00	0.00	0.00	0.00	0.00
10.0	0.00	0.00	0.00	0.00	0.00	0.00	0.00
12.5	0.00	0.00	0.00	0.00	0.00	0.00	0.00
15.0	0.00	0.00	0.00	0.00	0.00	0.00	0.00
17.5	0.00	0.00	0.00	0.00	0.00	0.00	0.00
20.0	0.00	0.00	0.00	0.00	0.00	0.00	0.00
22.5	0.00	0.00	0.00	0.00	0.00	0.00	0.00
25.0	0.00	0.00	0.00	0.00	0.00	0.00	0.00
27.5	0.00	0.00	0.00	0.00	0.00	0.00	0.00
30.0	0.00	0.00	0.00	0.00	0.00	0.00	0.00
32.5	0.00	0.00	0.00	0.00	0.00	0.00	0.00
35.0	0.00	0.00	0.00	0.00	0.00	0.00	0.00
37.5	0.00	0.00	0.00	0.00	0.00	0.00	0.00
40.0	0.00	0.00	0.00	0.00	0.00	0.00	0.00
42.5	0.00	0.00	0.00	0.00	0.00	0.00	0.00
45.0	0.00	0.00	0.00	0.00	0.00	0.00	0.00
47.5	0.00	0.00	0.00	0.00	0.00	0.00	0.00
50.0	0.00	0.00	0.00	0.00	0.00	0.00	0.00
52.5	0.00	0.00	0.00	0.00	0.00	0.00	0.00
55.0	0.00	0.00	0.00	0.00	0.00	0.00	0.00
57.5	0.00	0.00	0.00	0.00	0.00	0.00	0.00
60.0	0.00	0.00	0.00	0.00	0.00	0.00	0.00
62.5	0.00	0.00	0.00	0.00	0.00	0.00	0.00
65.0	0.00	0.00	0.00	0.00	0.00	0.00	0.00
67.5	0.00	0.00	0.00	0.00	0.00	0.00	0.00
70.0	0.00	0.00	0.00	0.00	0.00	0.00	0.00
72.5	0.00	0.00	0.00	0.00	0.00	0.00	0.00
75.0	0.00	0.00	0.00	0.00	0.00	0.00	0.00
77.5	0.00	0.00	0.00	0.00	0.00	0.00	0.00
80.0	0.00	0.00	0.00	0.00	0.00	0.00	0.00
82.5	0.00	0.00	0.00	0.00	0.00	0.00	0.00
85.0	0.00	0.00	0.00	0.00	0.00	0.00	0.00
87.5	0.00	0.00	0.00	0.00	0.00	0.00	0.00
90.0	0.00	0.00	0.00	0.00	0.00	0.00	0.00
92.5	0.00	0.00	0.00	0.00	0.00	0.00	0.00
95.0	0.00	0.00	0.00	0.00	0.00	0.00	0.00
97.5	0.00	0.00	0.00	0.00	0.00	0.00	0.00
100.0	0.00	0.00	0.00	0.00	0.00	0.00	0.00
102.5	0.00	0.00	0.00	0.00	0.00	0.00	0.00
105.0	0.00	0.00	0.00	0.00	0.00	0.00	0.00
107.5	0.00	0.00	0.00	0.00	0.00	0.00	0.00
110.0	0.00	0.00	0.00	0.00	0.00	0.00	0.00
112.5	0.00	0.00	0.00	0.00	0.00	0.00	0.00
115.0	0.00	0.00	0.00	0.00	0.00	0.00	0.00

IES INDOOR REPORT
PHOTOMETRIC FILENAME : SPL-ST-121-35WH.IES

CANDELA TABULATION - (Cont.)

117.5	0.00	0.00	0.00	0.00	0.00	0.00	0.00
120.0	0.00	0.00	0.00	0.00	0.00	0.00	0.00
122.5	0.00	0.00	0.00	0.00	0.00	0.00	0.00
125.0	0.00	0.00	0.00	0.00	0.00	0.00	0.00
127.5	0.00	0.00	0.00	0.00	0.00	0.00	0.00
130.0	0.00	0.00	0.00	0.00	0.00	0.00	0.00
132.5	0.00	0.00	0.00	0.00	0.00	0.00	0.00
135.0	0.00	0.00	0.00	0.00	0.00	0.00	0.00
137.5	0.00	0.00	0.00	0.00	0.00	0.00	0.00
140.0	0.00	0.00	0.00	0.00	0.00	0.00	0.00
142.5	0.00	0.00	0.00	0.00	0.00	0.00	0.00
145.0	0.00	0.00	0.00	0.00	0.00	0.00	0.00
147.5	0.00	0.00	0.00	0.00	0.00	0.00	0.00
150.0	0.00	0.00	0.00	0.00	0.00	0.00	0.00
152.5	0.00	0.00	0.00	0.00	0.00	0.00	0.00
155.0	0.00	0.00	0.00	0.00	0.00	0.00	0.00
157.5	0.00	0.00	0.00	0.00	0.00	0.00	0.00
160.0	0.00	0.00	0.00	0.00	0.00	0.00	0.00
162.5	0.00	0.00	0.00	0.00	0.00	0.00	0.00
165.0	0.00	0.00	0.00	0.00	0.00	0.00	0.00
167.5	0.00	0.00	0.00	0.00	0.00	0.00	0.00
170.0	0.00	0.00	0.00	0.00	0.00	0.00	0.00
172.5	0.00	0.00	0.00	0.00	0.00	0.00	0.00
175.0	0.00	0.00	0.00	0.00	0.00	0.00	0.00
177.5	0.00	0.00	0.00	0.00	0.00	0.00	0.00
180.0	0.00	0.00	0.00	0.00	0.00	0.00	0.00

IES INDOOR REPORT
PHOTOMETRIC FILENAME : SPL-ST-121-35WH.IES

ZONAL LUMEN SUMMARY

Zone	Lumens	%Lamp	%Fixt
0-20	0.17	N.A.	0.50
0-30	1.20	N.A.	3.80
0-40	3.38	N.A.	10.80
0-60	9.57	N.A.	30.70
0-80	16.20	N.A.	51.90
0-90	19.22	N.A.	61.60
10-90	19.21	N.A.	61.60
20-40	3.21	N.A.	10.30
20-50	6.12	N.A.	19.60
40-70	9.58	N.A.	30.70
60-80	6.63	N.A.	21.20
70-80	3.24	N.A.	10.40
80-90	3.02	N.A.	9.70
90-110	5.66	N.A.	18.10
90-120	7.93	N.A.	25.40
90-130	9.65	N.A.	30.90
90-150	11.50	N.A.	36.90
90-180	11.99	N.A.	38.40
110-180	6.32	N.A.	20.30
0-180	31.20	N.A.	100.00

Total Luminaire Efficiency = N.A.%

ZONAL LUMEN SUMMARY

Zone	Lumens
0-10	0.01
10-20	0.16
20-30	1.03
30-40	2.18
40-50	2.91
50-60	3.28
60-70	3.39
70-80	3.24
80-90	3.02
90-100	2.94
100-110	2.72
110-120	2.27
120-130	1.72
130-140	1.16
140-150	0.69
150-160	0.34
160-170	0.13
170-180	0.02

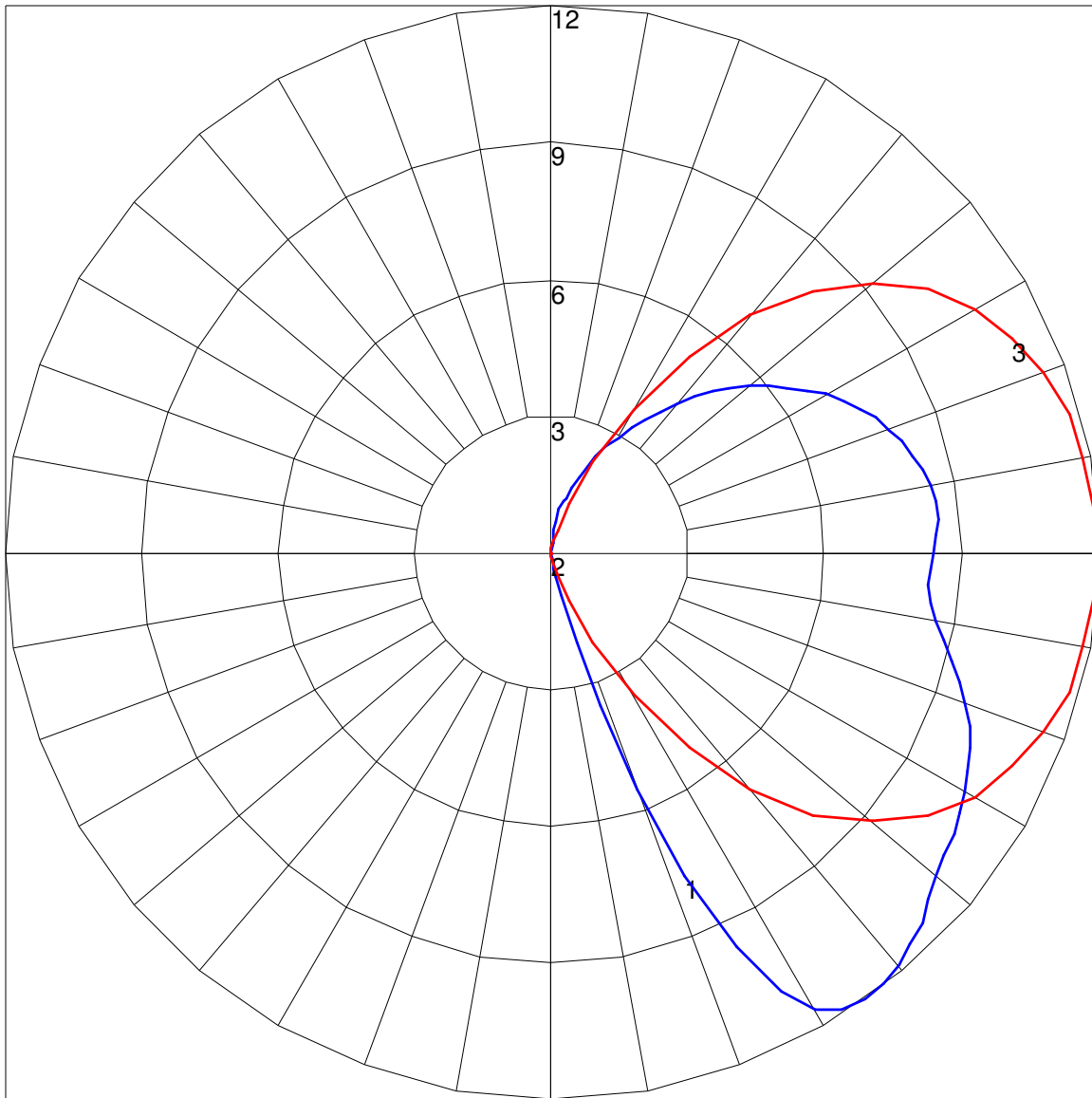
IES INDOOR REPORT
PHOTOMETRIC FILENAME : SPL-ST-121-35WH.IES

COEFFICIENTS OF UTILIZATION - ZONAL CAVITY METHOD

Effective Floor Cavity Reflectance 0.20

RC	80				70				50			30			10			0	
	RW	70	50	30	10	70	50	30	10	50	30	10	50	30	10	50	30		10
0	111	111	111	111	111	104	104	104	104	90	90	90	78	78	78	67	67	67	62
1	96	89	83	78	78	89	83	78	73	72	67	64	61	58	55	51	49	47	42
2	85	75	66	59	59	79	69	62	55	60	53	48	50	46	41	42	38	35	30
3	76	64	54	46	46	70	59	50	44	50	44	38	42	37	32	35	31	27	23
4	69	55	45	37	37	63	51	42	35	44	36	30	37	31	26	30	25	22	18
5	62	48	38	31	31	57	45	36	29	38	31	25	32	26	21	26	21	17	14
6	57	42	33	26	26	52	39	30	24	34	26	21	28	22	18	23	18	14	11
7	52	38	28	22	22	48	35	26	20	30	23	18	25	19	15	21	16	12	9
8	48	34	25	19	19	44	31	23	17	27	20	15	23	17	13	19	14	10	8
9	45	30	22	16	16	41	28	20	15	24	18	13	20	15	11	17	12	9	6
10	41	28	19	14	14	38	26	18	13	22	16	11	19	13	9	15	11	8	5

POLAR GRAPH



Maximum Candela = 12.4 Located At Horizontal Angle = 0, Vertical Angle = 35

1 - Vertical Plane Through Horizontal Angles (0 - 180) (Through Max. Cd.)

2 - Vertical Plane Through Horizontal Angles (90 - 270)

3 - Horizontal Cone Through Vertical Angle (35) (Through Max. Cd.)