

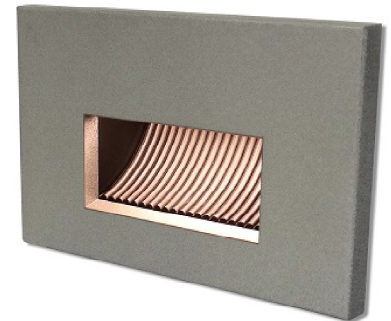
**IES INDOOR REPORT**  
**PHOTOMETRIC FILENAME : SPL-ST-123-35WH.IES**

**DESCRIPTION INFORMATION (From Photometric File)**

IESNA:LM-63-2002  
 [TEST] 3129  
 [ECN] 3165  
 [TESTLAB] Tempo LLC  
 [ISSUEDATE] 5/31/2017 2:05:13 PM  
 [MANUFAC] Tempo LLC  
 [LUMCAT] SPL-ST-123-35WH  
 [LUMINAIRE] White aluminum housing and coverplate with frosted lens  
 [LAMP] Four (4) white LEDs (3500K)  
 [ELECTRICALS] 11.95 VDC, 0.24 A, 1.00 PF

**CHARACTERISTICS**

Lumens Per Lamp	N.A. (absolute)
Total Lamp Lumens	N.A. (absolute)
Luminaire Lumens	81
Total Luminaire Efficiency	N.A.
Luminaire Efficacy Rating (LER)	29
Total Luminaire Watts	2.83
Ballast Factor	1.00
CIE Type	Semi-Direct
Spacing Criterion (0-180)	0.02
Spacing Criterion (90-270)	N.A.
Spacing Criterion (Diagonal)	96.30
Basic Luminous Shape	Vertical Rectangle
Luminous Length (0-180)	0.00 ft
Luminous Width (90-270)	0.21 ft
Luminous Height	0.09 ft



**LUMINANCE DATA (cd/sq.m)**

Angle In Degrees	Average 0-Deg	Average 45-Deg	Average 90-Deg
45	0	27193	0
55	0	21743	0
65	0	17891	0
75	0	14827	0
85	0	12618	0

**IES INDOOR REPORT**  
**PHOTOMETRIC FILENAME : SPL-ST-123-35WH.IES**

**CANDELA TABULATION**

	<u>0</u>	<u>5</u>	<u>10</u>	<u>15</u>	<u>20</u>	<u>25</u>	<u>30</u>	<u>35</u>	<u>40</u>	<u>45</u>
<b>0.0</b>	0.00	0.00	0.00	0.00	0.00	0.00	0.00	0.00	0.00	0.00
<b>2.5</b>	0.00	0.31	0.31	0.30	0.28	0.26	0.25	0.23	0.21	0.19
<b>5.0</b>	0.00	0.03	0.07	0.11	0.15	0.18	0.21	0.22	0.23	0.23
<b>7.5</b>	1.21	1.21	1.16	1.11	1.03	0.95	0.85	0.74	0.63	0.51
<b>10.0</b>	1.73	1.73	1.70	1.66	1.61	1.55	1.46	1.36	1.26	1.10
<b>12.5</b>	3.42	3.43	3.31	3.16	2.94	2.66	2.31	1.89	1.65	1.50
<b>15.0</b>	6.19	6.21	5.97	5.67	5.24	4.69	4.02	3.34	2.78	2.15
<b>17.5</b>	10.24	10.27	9.86	9.33	8.59	7.63	6.48	5.52	4.50	3.45
<b>20.0</b>	15.42	15.47	14.85	14.07	12.98	11.57	10.00	8.48	6.76	5.36
<b>22.5</b>	21.08	21.12	20.35	19.39	18.03	16.31	14.32	12.11	9.85	7.69
<b>25.0</b>	26.34	26.13	25.51	24.49	23.09	21.27	18.87	16.21	13.43	10.50
<b>27.5</b>	29.97	29.76	29.23	28.41	27.33	25.53	23.06	20.35	17.14	13.81
<b>30.0</b>	31.96	31.76	31.37	30.82	29.92	28.36	26.36	23.81	20.77	17.10
<b>32.5</b>	32.78	32.60	32.34	32.00	31.19	29.91	28.47	26.30	23.50	20.15
<b>35.0</b>	32.95	32.80	32.62	32.37	31.63	30.60	29.43	27.66	25.29	22.34
<b>37.5</b>	32.79	32.66	32.54	32.25	31.59	30.78	29.70	28.23	26.28	23.86
<b>40.0</b>	32.49	32.36	32.27	31.92	31.35	30.66	29.54	28.18	26.55	24.54
<b>42.5</b>	32.01	31.91	31.86	31.47	30.96	30.30	29.22	27.96	26.48	24.74
<b>45.0</b>	31.52	31.40	31.37	30.95	30.52	29.76	28.81	27.64	26.24	24.69
<b>47.5</b>	30.75	30.70	30.69	30.31	29.92	29.18	28.32	27.18	25.84	24.37
<b>50.0</b>	30.31	30.25	30.14	29.75	29.26	28.55	27.70	26.61	25.35	23.97
<b>52.5</b>	29.91	29.87	29.72	29.37	28.76	28.03	27.09	25.99	24.83	23.43
<b>55.0</b>	29.57	29.52	29.33	29.03	28.36	27.61	26.59	25.43	24.21	22.87
<b>57.5</b>	29.14	29.11	28.91	28.55	27.99	27.17	26.17	24.97	23.67	22.29
<b>60.0</b>	28.65	28.62	28.43	28.06	27.51	26.71	25.74	24.53	23.20	21.74
<b>62.5</b>	28.11	28.07	27.88	27.50	26.94	26.22	25.24	24.08	22.75	21.28
<b>65.0</b>	27.41	27.37	27.24	26.87	26.31	25.60	24.69	23.58	22.24	20.82
<b>67.5</b>	26.65	26.59	26.41	26.10	25.59	24.89	24.06	22.95	21.72	20.32
<b>70.0</b>	25.76	25.71	25.57	25.25	24.77	24.12	23.28	22.26	21.11	19.73
<b>72.5</b>	24.90	24.86	24.71	24.42	23.93	23.30	22.49	21.51	20.41	19.12
<b>75.0</b>	24.07	24.05	23.90	23.59	23.12	22.48	21.69	20.76	19.65	18.39
<b>77.5</b>	23.33	23.31	23.15	22.83	22.36	21.73	20.95	19.99	18.91	17.73
<b>80.0</b>	22.61	22.63	22.48	22.16	21.68	21.04	20.24	19.34	18.29	17.08
<b>82.5</b>	22.14	22.15	21.96	21.64	21.11	20.51	19.72	18.75	17.65	16.41
<b>85.0</b>	21.96	21.96	21.74	21.34	20.85	20.13	19.22	18.33	17.33	16.14
<b>87.5</b>	22.08	22.02	21.78	21.36	20.80	20.09	19.28	18.31	17.22	15.95
<b>90.0</b>	22.28	22.22	21.97	21.54	20.94	20.18	19.28	18.24	17.06	15.70
<b>92.5</b>	22.50	22.43	22.16	21.75	21.11	20.35	19.45	18.39	17.19	15.80
<b>95.0</b>	22.55	22.48	22.20	21.78	21.17	20.42	19.54	18.47	17.24	15.83
<b>97.5</b>	22.49	22.40	22.14	21.70	21.11	20.34	19.43	18.39	17.19	15.80
<b>100.0</b>	22.33	22.24	21.96	21.54	20.93	20.18	19.29	18.20	16.96	15.54
<b>102.5</b>	22.06	21.99	21.70	21.27	20.67	19.92	19.01	17.95	16.69	15.24
<b>105.0</b>	21.70	21.64	21.36	20.92	20.33	19.57	18.66	17.57	16.31	14.87
<b>107.5</b>	21.28	21.20	20.94	20.50	19.90	19.14	18.22	17.13	15.86	14.44
<b>110.0</b>	20.75	20.69	20.45	19.99	19.39	18.63	17.70	16.61	15.34	13.89
<b>112.5</b>	20.21	20.12	19.85	19.43	18.81	18.06	17.13	16.03	14.79	13.35
<b>115.0</b>	19.55	19.48	19.21	18.78	18.18	17.42	16.50	15.40	14.19	12.80
<b>117.5</b>	18.86	18.78	18.51	18.08	17.49	16.73	15.84	14.77	13.56	12.22
<b>120.0</b>	18.09	18.02	17.78	17.35	16.76	16.02	15.12	14.12	12.93	11.63
<b>122.5</b>	17.30	17.24	16.99	16.57	16.01	15.28	14.41	13.42	12.29	11.04
<b>125.0</b>	16.47	16.41	16.17	15.75	15.20	14.50	13.69	12.70	11.63	10.45
<b>127.5</b>	15.62	15.56	15.32	14.92	14.39	13.72	12.93	12.01	10.98	9.86
<b>130.0</b>	14.74	14.68	14.45	14.07	13.56	12.93	12.16	11.29	10.32	9.27
<b>132.5</b>	13.84	13.78	13.56	13.21	12.72	12.13	11.40	10.57	9.68	8.69

**IES INDOOR REPORT**  
**PHOTOMETRIC FILENAME : SPL-ST-123-35WH.IES**

**CANDELA TABULATION - (Cont.)**

135.0	12.93	12.87	12.67	12.35	11.88	11.32	10.63	9.87	9.02	8.12
137.5	12.00	11.96	11.77	11.46	11.04	10.50	9.89	9.17	8.39	7.57
140.0	11.06	11.03	10.86	10.59	10.20	9.71	9.15	8.49	7.78	7.02
142.5	10.16	10.14	9.99	9.73	9.39	8.94	8.41	7.85	7.20	6.49
145.0	9.31	9.29	9.15	8.91	8.58	8.19	7.71	7.20	6.61	5.98
147.5	8.47	8.45	8.32	8.11	7.82	7.48	7.06	6.57	6.04	5.47
150.0	7.66	7.63	7.52	7.34	7.10	6.78	6.40	5.96	5.48	4.97
152.5	6.85	6.84	6.75	6.60	6.37	6.09	5.75	5.36	4.95	4.49
155.0	6.12	6.09	6.01	5.86	5.67	5.41	5.12	4.79	4.42	4.01
157.5	5.37	5.38	5.28	5.16	4.99	4.77	4.52	4.23	3.90	3.55
160.0	4.66	4.67	4.59	4.48	4.33	4.15	3.93	3.68	3.40	3.17
162.5	3.97	3.98	3.91	3.82	3.70	3.55	3.36	3.22	3.05	2.85
165.0	3.32	3.32	3.29	3.25	3.18	3.10	3.00	2.86	2.66	2.45
167.5	2.94	2.94	2.89	2.83	2.74	2.64	2.51	2.37	2.08	1.66
170.0	2.31	2.31	2.26	2.20	2.09	1.94	1.74	1.50	1.20	1.06
172.5	1.65	1.61	1.51	1.42	1.31	1.21	1.10	1.01	0.93	0.86
175.0	0.00	0.56	0.58	0.58	0.59	0.59	0.57	0.55	0.52	0.47
177.5	0.00	0.44	0.43	0.42	0.39	0.36	0.34	0.32	0.29	0.26
180.0	0.00	0.00	0.00	0.00	0.00	0.00	0.00	0.00	0.00	0.00

**Vert. Angles**      **Horizontal Angles**

	<u>50</u>	<u>55</u>	<u>60</u>	<u>65</u>	<u>70</u>	<u>75</u>	<u>80</u>	<u>85</u>	<u>90</u>	<u>95</u>
0.0	0.00	0.00	0.00	0.00	0.00	0.00	0.00	0.00	0.00	0.00
2.5	0.17	0.15	0.14	0.12	0.10	0.08	0.06	0.04	0.00	0.00
5.0	0.23	0.21	0.18	0.15	0.12	0.10	0.07	0.04	0.00	0.00
7.5	0.42	0.37	0.31	0.21	0.10	0.07	0.05	0.04	0.00	0.00
10.0	0.95	0.80	0.67	0.49	0.27	0.03	0.01	0.01	0.00	0.00
12.5	1.34	1.15	0.95	0.76	0.51	0.25	0.07	0.05	0.00	0.00
15.0	1.65	1.37	1.05	0.83	0.62	0.39	0.17	0.09	0.00	0.00
17.5	2.63	1.78	1.31	0.85	0.64	0.44	0.29	0.15	0.00	0.00
20.0	3.93	2.81	1.73	1.08	0.62	0.42	0.35	0.23	0.00	0.00
22.5	5.74	4.01	2.64	1.49	0.65	0.51	0.41	0.26	0.00	0.00
25.0	7.91	5.63	3.69	2.14	1.06	0.60	0.50	0.28	0.00	0.00
27.5	10.47	7.47	5.04	3.03	1.50	0.65	0.62	0.30	0.00	0.00
30.0	13.37	9.73	6.50	3.94	1.98	0.65	0.78	0.33	0.00	0.00
32.5	16.19	12.05	8.22	5.08	2.69	0.90	0.77	0.37	0.00	0.00
35.0	18.71	14.47	10.14	6.38	3.49	1.24	0.70	0.40	0.00	0.00
37.5	20.69	16.65	12.07	7.80	4.30	1.70	0.60	0.44	0.00	0.00
40.0	21.94	18.39	13.97	9.25	5.17	2.25	0.46	0.48	0.00	0.00
42.5	22.59	19.70	15.68	10.79	6.21	2.89	0.31	0.48	0.00	0.00
45.0	22.81	20.36	16.82	12.07	7.22	3.49	0.19	0.47	0.00	0.00
47.5	22.70	20.59	17.39	13.08	8.18	4.10	0.07	0.44	0.00	0.00
50.0	22.36	20.38	17.71	13.83	9.11	4.71	0.20	0.40	0.00	0.00
52.5	21.92	20.09	17.63	14.36	9.88	5.24	0.92	0.41	0.00	0.00
55.0	21.41	19.68	17.39	14.39	10.27	5.70	1.64	0.43	0.00	0.00
57.5	20.84	19.16	17.07	14.20	10.52	6.14	2.26	0.44	0.00	0.00
60.0	20.28	18.61	16.52	13.91	10.62	6.53	2.79	0.45	0.00	0.00
62.5	19.75	18.00	15.97	13.54	10.53	6.66	2.85	0.45	0.00	0.00
65.0	19.23	17.40	15.44	13.11	10.25	6.63	2.85	0.45	0.00	0.00
67.5	18.72	16.93	14.95	12.62	9.92	6.53	2.86	0.46	0.00	0.00
70.0	18.19	16.44	14.41	12.09	9.54	6.38	2.87	0.48	0.00	0.00
72.5	17.61	15.91	13.86	11.58	9.17	6.23	2.98	0.38	0.00	0.00
75.0	16.99	15.34	13.36	11.15	8.83	6.05	3.04	0.28	0.00	0.00
77.5	16.36	14.74	12.82	10.69	8.45	5.84	3.06	0.15	0.00	0.00
80.0	15.70	14.11	12.24	10.19	8.04	5.61	3.04	0.00	0.00	0.00

**IES INDOOR REPORT**  
**PHOTOMETRIC FILENAME : SPL-ST-123-35WH.IES**

**CANDELA TABULATION - (Cont.)**

82.5	15.05	13.55	11.76	9.77	7.70	5.41	3.04	0.28	0.00	0.00
85.0	14.80	13.23	11.39	9.38	7.40	5.22	2.96	0.57	0.00	0.00
87.5	14.53	12.89	11.00	8.99	7.01	4.98	2.89	0.85	0.00	0.00
90.0	14.21	12.51	10.57	8.55	6.63	4.73	2.81	1.14	0.00	0.00
92.5	14.26	12.51	10.53	8.48	6.52	4.62	2.76	0.85	0.00	0.00
95.0	14.24	12.44	10.43	8.36	6.41	4.52	2.71	0.57	0.00	0.00
97.5	14.20	12.36	10.32	8.23	6.22	4.37	2.66	0.28	0.00	0.00
100.0	13.92	12.10	10.10	8.06	6.06	4.23	2.51	0.00	0.00	0.00
102.5	13.59	11.77	9.79	7.81	5.89	4.11	2.41	0.15	0.00	0.00
105.0	13.21	11.40	9.46	7.56	5.69	3.98	2.29	0.28	0.00	0.00
107.5	12.78	11.01	9.12	7.28	5.50	3.84	2.17	0.41	0.00	0.00
110.0	12.31	10.59	8.78	7.01	5.30	3.70	2.05	0.52	0.00	0.00
112.5	11.80	10.15	8.43	6.74	5.11	3.58	1.93	0.53	0.00	0.00
115.0	11.29	9.69	8.07	6.45	4.90	3.45	1.81	0.53	0.00	0.00
117.5	10.77	9.25	7.70	6.16	4.70	3.32	1.67	0.53	0.00	0.00
120.0	10.25	8.81	7.34	5.89	4.50	3.19	1.54	0.53	0.00	0.00
122.5	9.71	8.36	6.99	5.61	4.30	3.06	1.39	0.53	0.00	0.00
125.0	9.20	7.91	6.61	5.33	4.10	2.92	1.24	0.52	0.00	0.00
127.5	8.69	7.48	6.25	5.05	3.89	2.79	1.09	0.52	0.00	0.00
130.0	8.17	7.05	5.90	4.78	3.69	2.65	0.93	0.51	0.00	0.00
132.5	7.66	6.61	5.56	4.52	3.49	2.53	0.84	0.57	0.00	0.00
135.0	7.18	6.20	5.22	4.25	3.30	2.41	0.85	0.61	0.00	0.00
137.5	6.70	5.80	4.89	3.98	3.10	2.30	0.89	0.64	0.00	0.00
140.0	6.22	5.40	4.56	3.72	2.90	2.05	0.95	0.64	0.00	0.00
142.5	5.75	5.00	4.23	3.49	2.74	1.76	0.97	0.50	0.00	0.00
145.0	5.31	4.61	3.91	3.21	2.59	1.46	1.00	0.35	0.00	0.00
147.5	4.87	4.24	3.59	2.96	2.46	1.14	1.04	0.19	0.00	0.00
150.0	4.43	3.86	3.29	2.76	2.26	0.84	1.07	0.00	0.00	0.00
152.5	4.00	3.49	3.03	2.59	1.79	0.90	0.92	0.11	0.00	0.00
155.0	3.58	3.17	2.78	2.40	1.32	0.95	0.80	0.20	0.00	0.00
157.5	3.21	2.90	2.54	1.92	0.85	1.01	0.73	0.28	0.00	0.00
160.0	2.92	2.62	2.23	1.32	0.91	1.06	0.67	0.32	0.00	0.00
162.5	2.59	2.32	1.52	0.86	0.98	0.90	0.48	0.22	0.00	0.00
165.0	2.07	1.46	0.85	0.95	1.06	0.67	0.25	0.13	0.00	0.00
167.5	1.16	0.88	0.96	1.04	0.77	0.37	0.10	0.06	0.00	0.00
170.0	1.00	0.98	0.99	0.70	0.39	0.05	0.01	0.01	0.00	0.00
172.5	0.79	0.66	0.52	0.34	0.15	0.10	0.07	0.04	0.00	0.00
175.0	0.41	0.33	0.25	0.21	0.17	0.13	0.09	0.05	0.00	0.00
177.5	0.24	0.21	0.18	0.15	0.12	0.10	0.07	0.04	0.00	0.00
180.0	0.00	0.00	0.00	0.00	0.00	0.00	0.00	0.00	0.00	0.00

**Vert. Horizontal Angles**

	<u>100</u>	<u>105</u>	<u>110</u>	<u>115</u>	<u>120</u>	<u>125</u>	<u>130</u>	<u>135</u>	<u>140</u>	<u>145</u>
0.0	0.00	0.00	0.00	0.00	0.00	0.00	0.00	0.00	0.00	0.00
2.5	0.00	0.00	0.00	0.00	0.00	0.00	0.00	0.00	0.00	0.00
5.0	0.00	0.00	0.00	0.00	0.00	0.00	0.00	0.00	0.00	0.00
7.5	0.00	0.00	0.00	0.00	0.00	0.00	0.00	0.00	0.00	0.00
10.0	0.00	0.00	0.00	0.00	0.00	0.00	0.00	0.00	0.00	0.00
12.5	0.00	0.00	0.00	0.00	0.00	0.00	0.00	0.00	0.00	0.00
15.0	0.00	0.00	0.00	0.00	0.00	0.00	0.00	0.00	0.00	0.00
17.5	0.00	0.00	0.00	0.00	0.00	0.00	0.00	0.00	0.00	0.00
20.0	0.00	0.00	0.00	0.00	0.00	0.00	0.00	0.00	0.00	0.00
22.5	0.00	0.00	0.00	0.00	0.00	0.00	0.00	0.00	0.00	0.00
25.0	0.00	0.00	0.00	0.00	0.00	0.00	0.00	0.00	0.00	0.00
27.5	0.00	0.00	0.00	0.00	0.00	0.00	0.00	0.00	0.00	0.00

**IES INDOOR REPORT**  
**PHOTOMETRIC FILENAME : SPL-ST-123-35WH.IES**

**CANDELA TABULATION - (Cont.)**

30.0	0.00	0.00	0.00	0.00	0.00	0.00	0.00	0.00	0.00	0.00
32.5	0.00	0.00	0.00	0.00	0.00	0.00	0.00	0.00	0.00	0.00
35.0	0.00	0.00	0.00	0.00	0.00	0.00	0.00	0.00	0.00	0.00
37.5	0.00	0.00	0.00	0.00	0.00	0.00	0.00	0.00	0.00	0.00
40.0	0.00	0.00	0.00	0.00	0.00	0.00	0.00	0.00	0.00	0.00
42.5	0.00	0.00	0.00	0.00	0.00	0.00	0.00	0.00	0.00	0.00
45.0	0.00	0.00	0.00	0.00	0.00	0.00	0.00	0.00	0.00	0.00
47.5	0.00	0.00	0.00	0.00	0.00	0.00	0.00	0.00	0.00	0.00
50.0	0.00	0.00	0.00	0.00	0.00	0.00	0.00	0.00	0.00	0.00
52.5	0.00	0.00	0.00	0.00	0.00	0.00	0.00	0.00	0.00	0.00
55.0	0.00	0.00	0.00	0.00	0.00	0.00	0.00	0.00	0.00	0.00
57.5	0.00	0.00	0.00	0.00	0.00	0.00	0.00	0.00	0.00	0.00
60.0	0.00	0.00	0.00	0.00	0.00	0.00	0.00	0.00	0.00	0.00
62.5	0.00	0.00	0.00	0.00	0.00	0.00	0.00	0.00	0.00	0.00
65.0	0.00	0.00	0.00	0.00	0.00	0.00	0.00	0.00	0.00	0.00
67.5	0.00	0.00	0.00	0.00	0.00	0.00	0.00	0.00	0.00	0.00
70.0	0.00	0.00	0.00	0.00	0.00	0.00	0.00	0.00	0.00	0.00
72.5	0.00	0.00	0.00	0.00	0.00	0.00	0.00	0.00	0.00	0.00
75.0	0.00	0.00	0.00	0.00	0.00	0.00	0.00	0.00	0.00	0.00
77.5	0.00	0.00	0.00	0.00	0.00	0.00	0.00	0.00	0.00	0.00
80.0	0.00	0.00	0.00	0.00	0.00	0.00	0.00	0.00	0.00	0.00
82.5	0.00	0.00	0.00	0.00	0.00	0.00	0.00	0.00	0.00	0.00
85.0	0.00	0.00	0.00	0.00	0.00	0.00	0.00	0.00	0.00	0.00
87.5	0.00	0.00	0.00	0.00	0.00	0.00	0.00	0.00	0.00	0.00
90.0	0.00	0.00	0.00	0.00	0.00	0.00	0.00	0.00	0.00	0.00
92.5	0.00	0.00	0.00	0.00	0.00	0.00	0.00	0.00	0.00	0.00
95.0	0.00	0.00	0.00	0.00	0.00	0.00	0.00	0.00	0.00	0.00
97.5	0.00	0.00	0.00	0.00	0.00	0.00	0.00	0.00	0.00	0.00
100.0	0.00	0.00	0.00	0.00	0.00	0.00	0.00	0.00	0.00	0.00
102.5	0.00	0.00	0.00	0.00	0.00	0.00	0.00	0.00	0.00	0.00
105.0	0.00	0.00	0.00	0.00	0.00	0.00	0.00	0.00	0.00	0.00
107.5	0.00	0.00	0.00	0.00	0.00	0.00	0.00	0.00	0.00	0.00
110.0	0.00	0.00	0.00	0.00	0.00	0.00	0.00	0.00	0.00	0.00
112.5	0.00	0.00	0.00	0.00	0.00	0.00	0.00	0.00	0.00	0.00
115.0	0.00	0.00	0.00	0.00	0.00	0.00	0.00	0.00	0.00	0.00
117.5	0.00	0.00	0.00	0.00	0.00	0.00	0.00	0.00	0.00	0.00
120.0	0.00	0.00	0.00	0.00	0.00	0.00	0.00	0.00	0.00	0.00
122.5	0.00	0.00	0.00	0.00	0.00	0.00	0.00	0.00	0.00	0.00
125.0	0.00	0.00	0.00	0.00	0.00	0.00	0.00	0.00	0.00	0.00
127.5	0.00	0.00	0.00	0.00	0.00	0.00	0.00	0.00	0.00	0.00
130.0	0.00	0.00	0.00	0.00	0.00	0.00	0.00	0.00	0.00	0.00
132.5	0.00	0.00	0.00	0.00	0.00	0.00	0.00	0.00	0.00	0.00
135.0	0.00	0.00	0.00	0.00	0.00	0.00	0.00	0.00	0.00	0.00
137.5	0.00	0.00	0.00	0.00	0.00	0.00	0.00	0.00	0.00	0.00
140.0	0.00	0.00	0.00	0.00	0.00	0.00	0.00	0.00	0.00	0.00
142.5	0.00	0.00	0.00	0.00	0.00	0.00	0.00	0.00	0.00	0.00
145.0	0.00	0.00	0.00	0.00	0.00	0.00	0.00	0.00	0.00	0.00
147.5	0.00	0.00	0.00	0.00	0.00	0.00	0.00	0.00	0.00	0.00
150.0	0.00	0.00	0.00	0.00	0.00	0.00	0.00	0.00	0.00	0.00
152.5	0.00	0.00	0.00	0.00	0.00	0.00	0.00	0.00	0.00	0.00
155.0	0.00	0.00	0.00	0.00	0.00	0.00	0.00	0.00	0.00	0.00
157.5	0.00	0.00	0.00	0.00	0.00	0.00	0.00	0.00	0.00	0.00
160.0	0.00	0.00	0.00	0.00	0.00	0.00	0.00	0.00	0.00	0.00
162.5	0.00	0.00	0.00	0.00	0.00	0.00	0.00	0.00	0.00	0.00
165.0	0.00	0.00	0.00	0.00	0.00	0.00	0.00	0.00	0.00	0.00
167.5	0.00	0.00	0.00	0.00	0.00	0.00	0.00	0.00	0.00	0.00

**IES INDOOR REPORT**  
**PHOTOMETRIC FILENAME : SPL-ST-123-35WH.IES**

**CANDELA TABULATION - (Cont.)**

170.0	0.00	0.00	0.00	0.00	0.00	0.00	0.00	0.00	0.00	0.00
172.5	0.00	0.00	0.00	0.00	0.00	0.00	0.00	0.00	0.00	0.00
175.0	0.00	0.00	0.00	0.00	0.00	0.00	0.00	0.00	0.00	0.00
177.5	0.00	0.00	0.00	0.00	0.00	0.00	0.00	0.00	0.00	0.00
180.0	0.00	0.00	0.00	0.00	0.00	0.00	0.00	0.00	0.00	0.00

**Vert. Angles**      **Horizontal Angles**

	<u>150</u>	<u>155</u>	<u>160</u>	<u>165</u>	<u>170</u>	<u>175</u>	<u>180</u>
0.0	0.00	0.00	0.00	0.00	0.00	0.00	0.00
2.5	0.00	0.00	0.00	0.00	0.00	0.00	0.00
5.0	0.00	0.00	0.00	0.00	0.00	0.00	0.00
7.5	0.00	0.00	0.00	0.00	0.00	0.00	0.00
10.0	0.00	0.00	0.00	0.00	0.00	0.00	0.00
12.5	0.00	0.00	0.00	0.00	0.00	0.00	0.00
15.0	0.00	0.00	0.00	0.00	0.00	0.00	0.00
17.5	0.00	0.00	0.00	0.00	0.00	0.00	0.00
20.0	0.00	0.00	0.00	0.00	0.00	0.00	0.00
22.5	0.00	0.00	0.00	0.00	0.00	0.00	0.00
25.0	0.00	0.00	0.00	0.00	0.00	0.00	0.00
27.5	0.00	0.00	0.00	0.00	0.00	0.00	0.00
30.0	0.00	0.00	0.00	0.00	0.00	0.00	0.00
32.5	0.00	0.00	0.00	0.00	0.00	0.00	0.00
35.0	0.00	0.00	0.00	0.00	0.00	0.00	0.00
37.5	0.00	0.00	0.00	0.00	0.00	0.00	0.00
40.0	0.00	0.00	0.00	0.00	0.00	0.00	0.00
42.5	0.00	0.00	0.00	0.00	0.00	0.00	0.00
45.0	0.00	0.00	0.00	0.00	0.00	0.00	0.00
47.5	0.00	0.00	0.00	0.00	0.00	0.00	0.00
50.0	0.00	0.00	0.00	0.00	0.00	0.00	0.00
52.5	0.00	0.00	0.00	0.00	0.00	0.00	0.00
55.0	0.00	0.00	0.00	0.00	0.00	0.00	0.00
57.5	0.00	0.00	0.00	0.00	0.00	0.00	0.00
60.0	0.00	0.00	0.00	0.00	0.00	0.00	0.00
62.5	0.00	0.00	0.00	0.00	0.00	0.00	0.00
65.0	0.00	0.00	0.00	0.00	0.00	0.00	0.00
67.5	0.00	0.00	0.00	0.00	0.00	0.00	0.00
70.0	0.00	0.00	0.00	0.00	0.00	0.00	0.00
72.5	0.00	0.00	0.00	0.00	0.00	0.00	0.00
75.0	0.00	0.00	0.00	0.00	0.00	0.00	0.00
77.5	0.00	0.00	0.00	0.00	0.00	0.00	0.00
80.0	0.00	0.00	0.00	0.00	0.00	0.00	0.00
82.5	0.00	0.00	0.00	0.00	0.00	0.00	0.00
85.0	0.00	0.00	0.00	0.00	0.00	0.00	0.00
87.5	0.00	0.00	0.00	0.00	0.00	0.00	0.00
90.0	0.00	0.00	0.00	0.00	0.00	0.00	0.00
92.5	0.00	0.00	0.00	0.00	0.00	0.00	0.00
95.0	0.00	0.00	0.00	0.00	0.00	0.00	0.00
97.5	0.00	0.00	0.00	0.00	0.00	0.00	0.00
100.0	0.00	0.00	0.00	0.00	0.00	0.00	0.00
102.5	0.00	0.00	0.00	0.00	0.00	0.00	0.00
105.0	0.00	0.00	0.00	0.00	0.00	0.00	0.00
107.5	0.00	0.00	0.00	0.00	0.00	0.00	0.00
110.0	0.00	0.00	0.00	0.00	0.00	0.00	0.00
112.5	0.00	0.00	0.00	0.00	0.00	0.00	0.00
115.0	0.00	0.00	0.00	0.00	0.00	0.00	0.00

**IES INDOOR REPORT**  
**PHOTOMETRIC FILENAME : SPL-ST-123-35WH.IES**

**CANDELA TABULATION - (Cont.)**

117.5	0.00	0.00	0.00	0.00	0.00	0.00	0.00
120.0	0.00	0.00	0.00	0.00	0.00	0.00	0.00
122.5	0.00	0.00	0.00	0.00	0.00	0.00	0.00
125.0	0.00	0.00	0.00	0.00	0.00	0.00	0.00
127.5	0.00	0.00	0.00	0.00	0.00	0.00	0.00
130.0	0.00	0.00	0.00	0.00	0.00	0.00	0.00
132.5	0.00	0.00	0.00	0.00	0.00	0.00	0.00
135.0	0.00	0.00	0.00	0.00	0.00	0.00	0.00
137.5	0.00	0.00	0.00	0.00	0.00	0.00	0.00
140.0	0.00	0.00	0.00	0.00	0.00	0.00	0.00
142.5	0.00	0.00	0.00	0.00	0.00	0.00	0.00
145.0	0.00	0.00	0.00	0.00	0.00	0.00	0.00
147.5	0.00	0.00	0.00	0.00	0.00	0.00	0.00
150.0	0.00	0.00	0.00	0.00	0.00	0.00	0.00
152.5	0.00	0.00	0.00	0.00	0.00	0.00	0.00
155.0	0.00	0.00	0.00	0.00	0.00	0.00	0.00
157.5	0.00	0.00	0.00	0.00	0.00	0.00	0.00
160.0	0.00	0.00	0.00	0.00	0.00	0.00	0.00
162.5	0.00	0.00	0.00	0.00	0.00	0.00	0.00
165.0	0.00	0.00	0.00	0.00	0.00	0.00	0.00
167.5	0.00	0.00	0.00	0.00	0.00	0.00	0.00
170.0	0.00	0.00	0.00	0.00	0.00	0.00	0.00
172.5	0.00	0.00	0.00	0.00	0.00	0.00	0.00
175.0	0.00	0.00	0.00	0.00	0.00	0.00	0.00
177.5	0.00	0.00	0.00	0.00	0.00	0.00	0.00
180.0	0.00	0.00	0.00	0.00	0.00	0.00	0.00

**IES INDOOR REPORT**  
**PHOTOMETRIC FILENAME : SPL-ST-123-35WH.IES**

**ZONAL LUMEN SUMMARY**

Zone	Lumens	%Lamp	%Fixt
0-20	0.51	N.A.	0.60
0-30	3.29	N.A.	4.10
0-40	9.11	N.A.	11.30
0-60	25.49	N.A.	31.50
0-80	42.76	N.A.	52.90
0-90	50.48	N.A.	62.50
10-90	50.45	N.A.	62.40
20-40	8.60	N.A.	10.60
20-50	16.31	N.A.	20.20
40-70	25.28	N.A.	31.30
60-80	17.27	N.A.	21.40
70-80	8.37	N.A.	10.40
80-90	7.72	N.A.	9.60
90-110	14.46	N.A.	17.90
90-120	20.19	N.A.	25.00
90-130	24.50	N.A.	30.30
90-150	29.16	N.A.	36.10
90-180	30.35	N.A.	37.60
110-180	15.88	N.A.	19.60
0-180	80.83	N.A.	100.00

Total Luminaire Efficiency = N.A.%

**ZONAL LUMEN SUMMARY**

Zone	Lumens
0-10	0.02
10-20	0.48
20-30	2.78
30-40	5.82
40-50	7.71
50-60	8.67
60-70	8.90
70-80	8.37
80-90	7.72
90-100	7.55
100-110	6.92
110-120	5.73
120-130	4.31
130-140	2.92
140-150	1.74
150-160	0.86
160-170	0.30
170-180	0.03



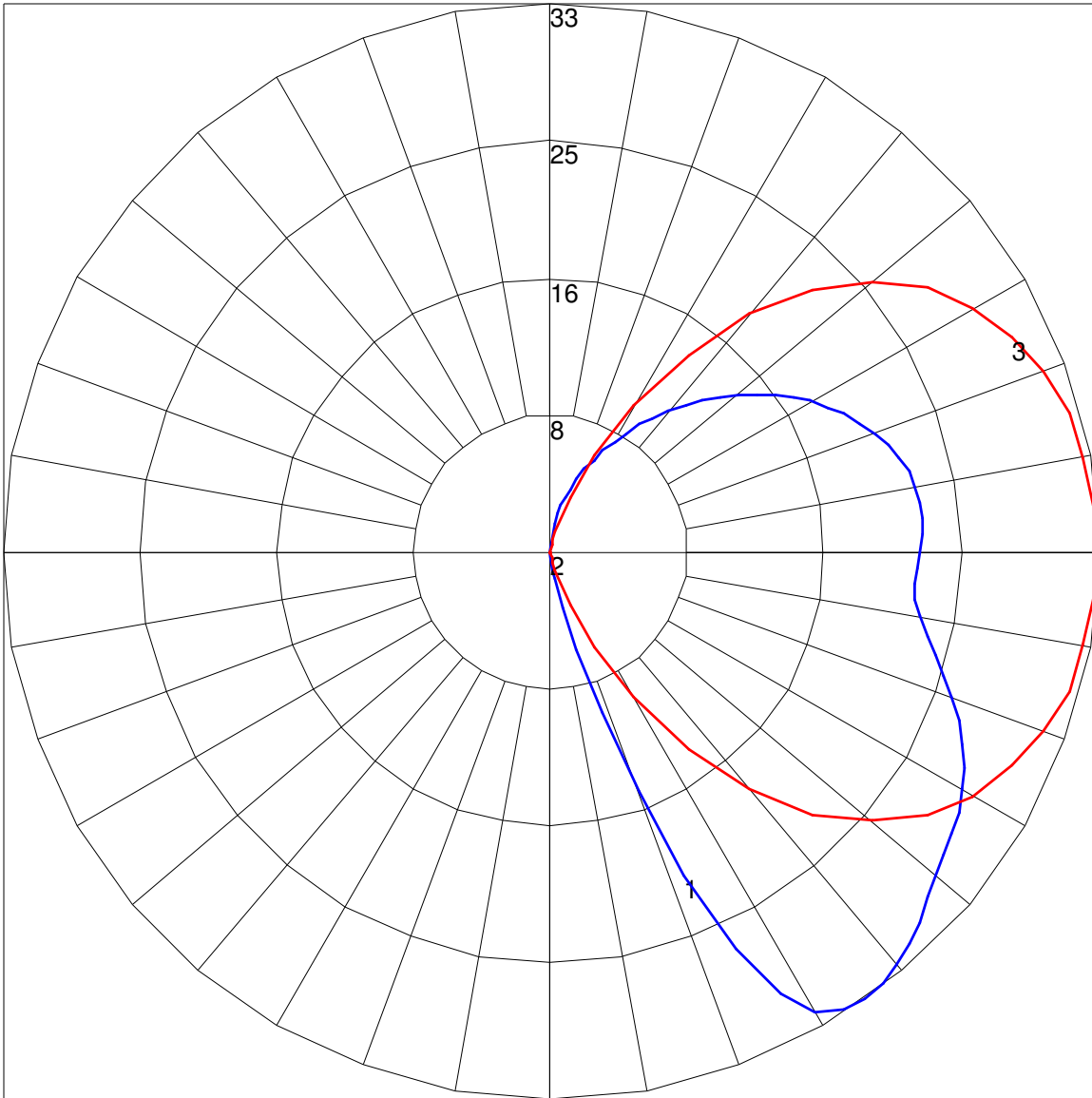
**IES INDOOR REPORT**  
**PHOTOMETRIC FILENAME : SPL-ST-123-35WH.IES**

**COEFFICIENTS OF UTILIZATION - ZONAL CAVITY METHOD**

Effective Floor Cavity Reflectance 0.20

RC	80				70				50			30			10			0
RW	70	50	30	10	70	50	30	10	50	30	10	50	30	10	50	30	10	0
0	110	110	110	110	103	103	103	103	90	90	90	78	78	78	67	67	67	62
1	95	89	83	78	89	83	78	73	71	67	64	61	58	55	52	49	47	42
2	85	74	66	59	78	69	62	55	59	53	48	50	46	42	42	39	35	31
3	76	63	54	46	70	59	50	43	50	44	38	43	37	33	35	31	27	23
4	68	55	45	37	63	51	42	35	44	36	30	37	31	26	30	26	22	18
5	62	48	38	31	57	44	35	29	38	31	25	32	26	21	26	22	18	14
6	57	42	33	26	52	39	30	24	34	26	21	28	22	18	23	18	15	12
7	52	38	28	22	48	35	26	20	30	23	18	25	19	15	21	16	12	10
8	48	34	25	19	44	31	23	17	27	20	15	23	17	13	19	14	10	8
9	44	30	22	16	41	28	20	15	24	18	13	21	15	11	17	12	9	7
10	41	28	19	14	38	26	18	13	22	16	11	19	13	9	16	11	8	6

POLAR GRAPH



Maximum Candela = 32.95 Located At Horizontal Angle = 0, Vertical Angle = 35

# 1 - Vertical Plane Through Horizontal Angles (0 - 180) (Through Max. Cd.)

# 2 - Vertical Plane Through Horizontal Angles (90 - 270)

# 3 - Horizontal Cone Through Vertical Angle (35) (Through Max. Cd.)